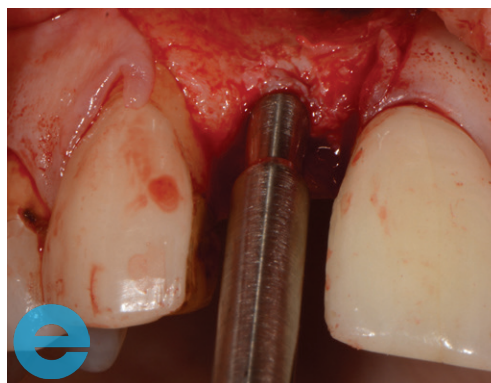


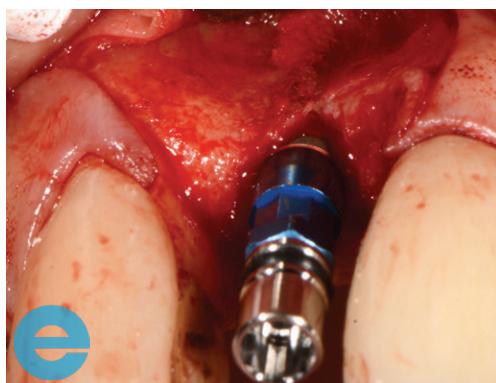
# ANTERIOR CONCAVITY CASE STUDY



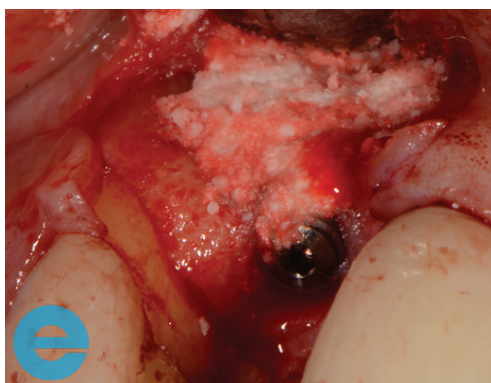
1. Concavity due to bone remodelling after tooth extraction.



2. Bone expansion prior to implant placement.



3. Placement of implant.



4. Graft with EthOss® after thorough removal of any soft tissue remaining on the bone surface.



5. 1 year loaded, restored tissue profile (viewed apically).

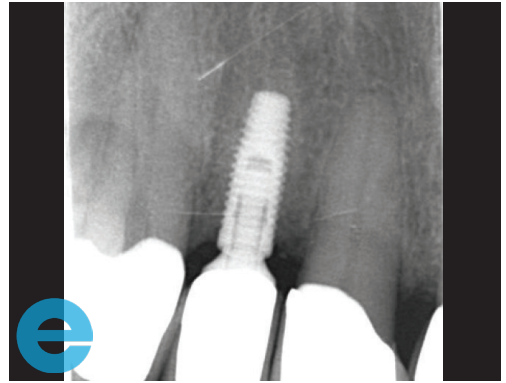


6. 1½ years loaded showing soft tissue profile.

# ANTERIOR CONCAVITY CASE STUDY



7. Aesthetic result after 1½ years.



8. X-Ray after 1½ years showing bone growth.



# GROW STRONGER

## USEFUL RESOURCES

### RECOMMENDED CLINICAL PROTOCOL

*Clinical study showcasing recommended clinical protocol for EthOss*

Download

### SURGICAL GUIDELINES

*The official recommended guide on how to use EthOss*

Download

### HOW TO MIX ETHOSS

*Explainer video*

Watch