

#whdentalwerk



video.wh.com

Now at
your dealer
or **wh.com**



Assistina Twin with Quick Connect by W&H

The adaptor system

Quick and simple adaptor changes optimize your processes and increase efficiency in practice.

You decide which adaptors you actually need.
Equip your Assistina Twin according to your needs
and only use the right adaptors suitable for you in
the two chambers.



assistina ^{TWIN}









System overview adaptor

ASSISTINA TWIN (MB-302)

with Quick Connect by W&H





Straight and contra-angle handpieces

All straight and contra-angle handpieces with ISO connection	
Contra-angles with removable heads	 Adaptor REF 02679000
T1 CLASSIC from Sirona Dental Systems for contra-angle handpieces	 Adaptor REF 02691000
FG chuck system (W&H, Sirona Dental Systems)	 Adaptor REF 02693000
Entran contra-angle head	 Adaptor REF 05204600

Adaptor Quick ISO
REF 06422600



Turbines

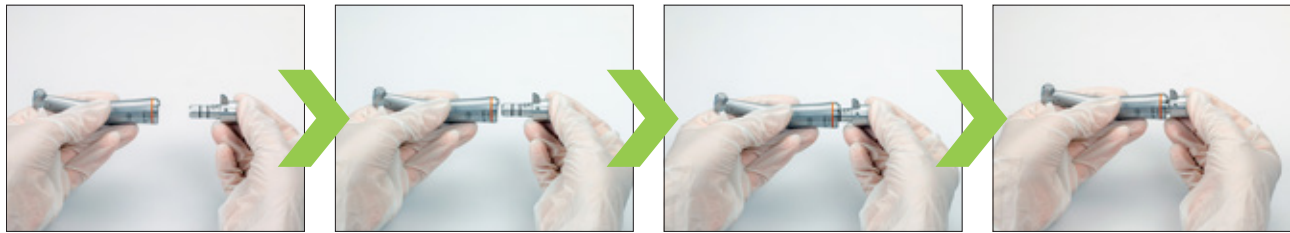
W&H turbines, air scaler and air motors with Roto Quick system	 W&H Adaptor REF 02690400
T1, T2, T3 from Sirona Dental Systems	 Adaptor REF 02692000
Turbines with Multiflex connection from Kaltenbach & Voigt	 Adaptor REF 04713200
Turbines with Borden 2(3)-hole connection	 Adaptor REF 02083500
Turbines or adaptors with standard 4-hole connection (with or without light)	

Adaptor Quick RM
REF 06395100



Quick ISO adaptor for straight and contra-angle handpieces

Preparation outside and use in the Assistina Twin



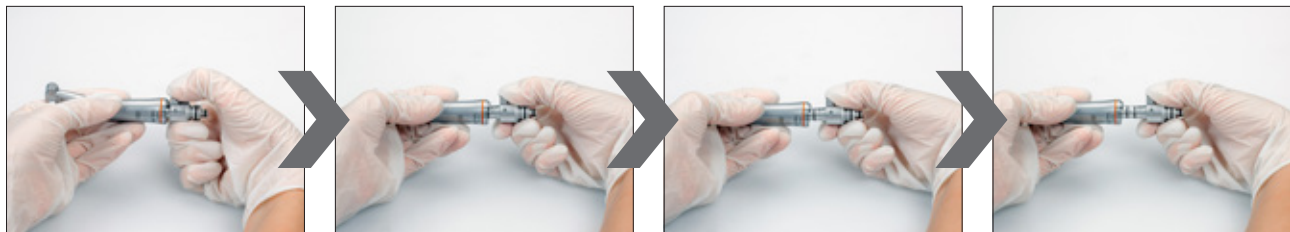
- › Assemble the straight or contra-angle handpiece on the Quick ISO adaptor



- › Assemble the adaptor connection of the straight or contra-angle handpiece on the maintenance attachment in the Assistina Twin



- › Remove the adaptor connection of the straight or contra-angle handpiece from the maintenance attachment of the Assistina Twin



- › Remove the straight or contra-angle handpiece from the Quick ISO adaptor

Preparation and use in the Assistina Twin



- › Assemble the Quick ISO adaptor on the maintenance attachment in the Assistina Twin



- › Assemble the straight or contra-angle handpiece on the Quick ISO adaptor



- › Remove the straight or contra-angle handpiece from the Quick ISO adaptor



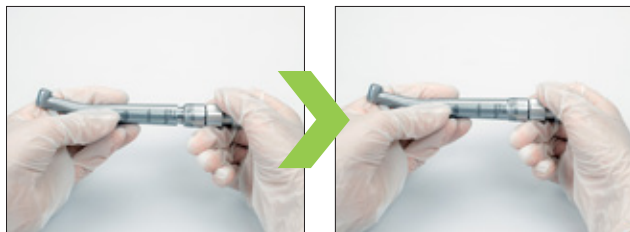
- › Remove the Quick ISO adaptor from the maintenance attachment of the Assistina Twin

Quick RM adaptor for turbine handpieces

Preparation outside and use in the Assistina Twin



› Screw the Quick RM adaptor to the W&H Roto Quick adaptor



› Assemble the turbine handpiece on the W&H Roto Quick adaptor



› Assemble the adaptor connection of the turbine handpiece on the maintenance attachment in the Assistina Twin

After
the maintenance process



› Remove the adaptor connection of the turbine handpiece from the maintenance attachment of the Assistina Twin



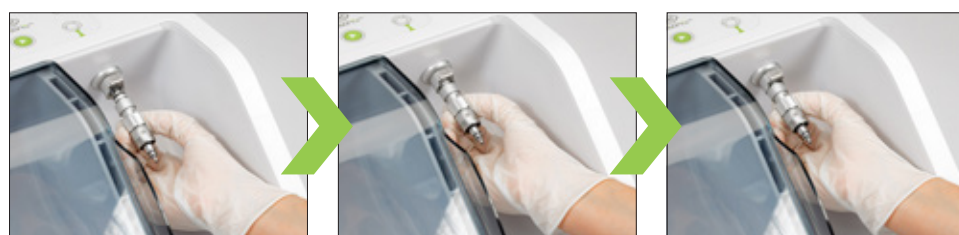
› Remove the turbine handpiece from the W&H Roto Quick adaptor

The simple assembly and removal of the respective adaptor connection enables a **fast and efficient work** – before, during and after the maintenance process.

Preparation and use in the Assistina Twin



- › Screw the Quick RM adaptor to the W&H Roto Quick adaptor



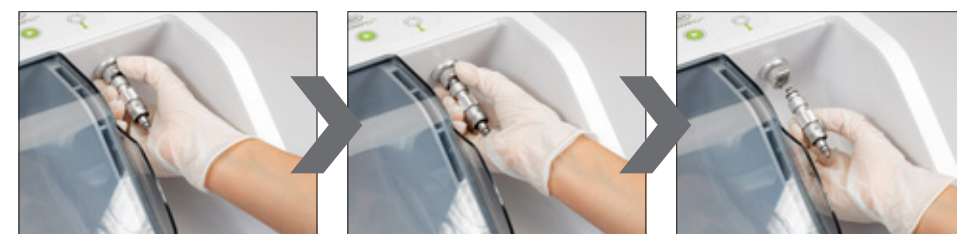
- › Assemble the adaptor connection on the maintenance attachment in the Assistina Twin



- › Assemble the turbine handpiece on the W&H Roto Quick adaptor



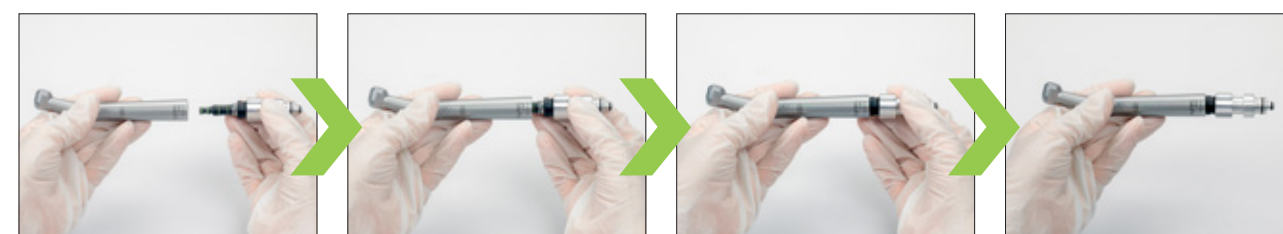
- › Remove the turbine handpiece from the W&H Roto Quick adaptor



- › Remove the adaptor connection from the maintenance attachment of the Assistina Twin

Quick RM adaptor for turbine handpieces with different connections

- › Screw the Quick RM adaptor with a Multiflex adaptor for example



- › Assemble the turbine handpiece on the Multiflex adaptor
- › Assemble the adaptor connection of the turbine handpiece onto the maintenance attachment in the Assistina Twin, start the maintenance process and after completion remove the adaptor connection of the turbine handpiece

Quick RM adaptor for turbine handpieces with fix connection

Preparation outside and use in the Assistina Twin



- › Screw the Quick RM adaptor to the turbine handpiece with fix connection

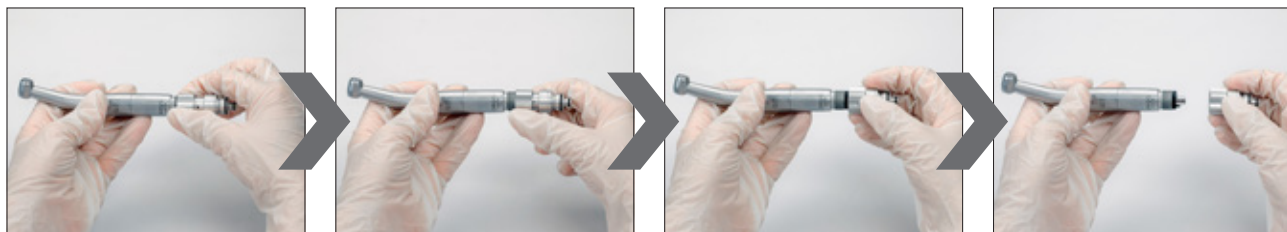


- › Assemble the adaptor connection of the turbine handpiece with fix connection on the maintenance attachment in the Assistina Twin

After
the maintenance process



- › Remove the adaptor connection of the turbine handpiece with fix connection from the maintenance attachment of the Assistina Twin



- › Unscrew the turbine handpiece with fix connection from the Quick RM adaptor



quick
connect
by W&H



W&H Dentalwerk Bürmoos GmbH
Ignaz-Glaser-Straße 53, Postfach 1
5111 Bürmoos, **Austria**
t +43 6274 6236-0
f +43 6274 6236-55
office@wh.com
wh.com

Pictures are for illustrative purposes only. Additional equipment and accessories shown are not included as standard.

20544 AEN Rev. 000 / 19.11.2020
Subject to alterations