

EARLY PLACEMENT CASE STUDY



1. Initial Clinical view.



2. Initial Clinical view.



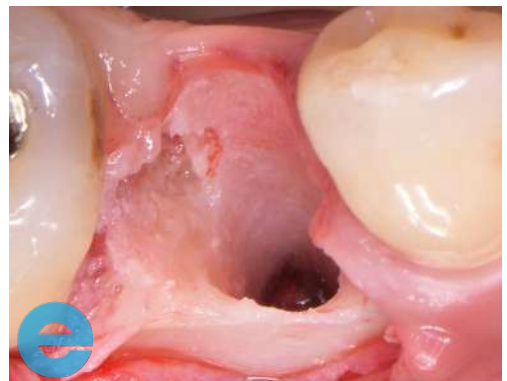
3. Root to be removed.



4. Site-specific flap raised, small amount of bone removed and root cut into pieces



5. Debridement of the extraction socket. Degranulation burs used to remove all soft tissues and smooth socket walls.



6. Clinical view of the extraction site following degranulation.

EARLY PLACEMENT CASE STUDY



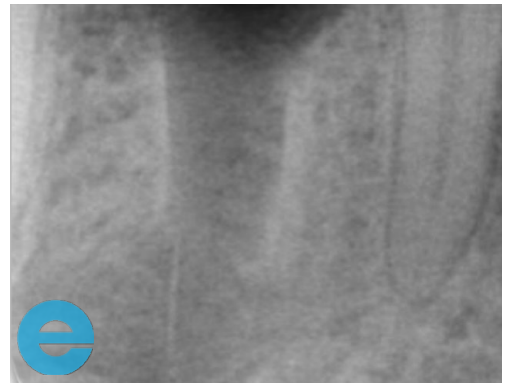
7. Flap repositioned and sutured with 5-0 absorbable sutures.



8. Clinical view of the site 1 month post-extraction.



9. Clinical view of the site 1 month post-extraction



10. Periapical x-ray 1 month post extraction



11. Site-specific flap raised.

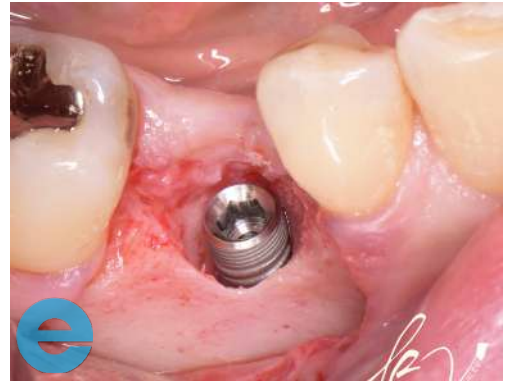


12. Area debrided from all soft tissues

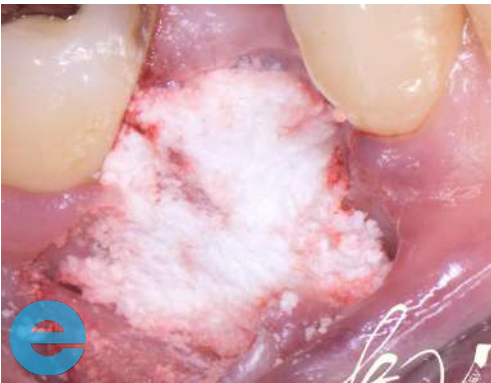
EARLY PLACEMENT CASE STUDY



13. Precise placement of the implant using fully guided surgery



14. Precise placement of the implant using fully guided surgery.



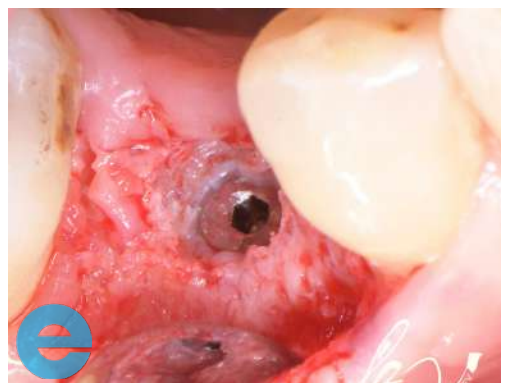
15. Grafted with EthOss®. No additional collagen membranes used



16. Clinical view of the site 3 months post-op



17. Surgical re-entry. After 3 months, the site was covered by newly formed regenerated bone.



18. The cover-screw was exposed using a round bur.

EARLY PLACEMENT CASE STUDY



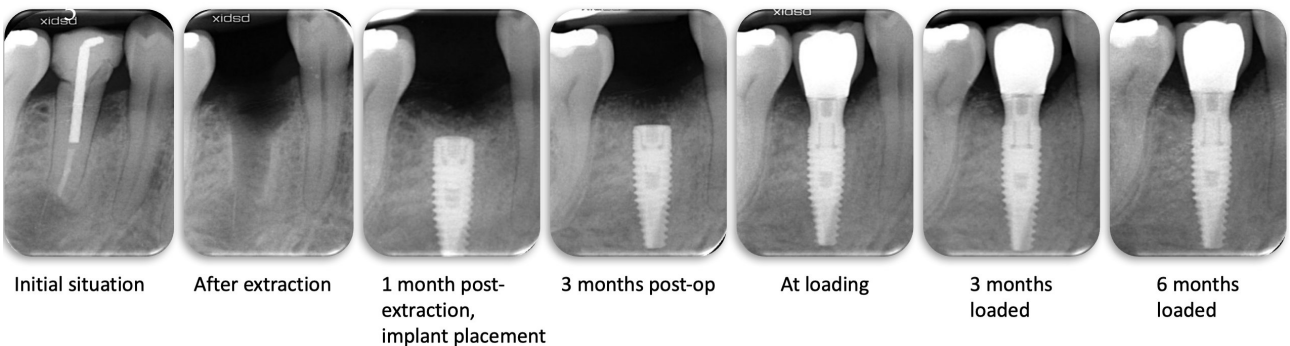
19. Three weeks after uncovering, the soft tissues have matured around the healing abutment.



20. High ISQ measurement of 75 showing excellent secondary stability.



21. The implant was successfully restored with a screw-retained crown



Initial situation

After extraction

1 month post-extraction, implant placement

3 months post-op

At loading

3 months loaded

6 months loaded



GROW STRONGER

USEFUL RESOURCES

RECOMMENDED CLINICAL PROTOCOL

Clinical study showcasing recommended clinical protocol for EthOss

Download

SURGICAL GUIDELINES

The official recommended guide on how to use EthOss

Download

HOW TO MIX ETHOSS

Explainer video

Watch