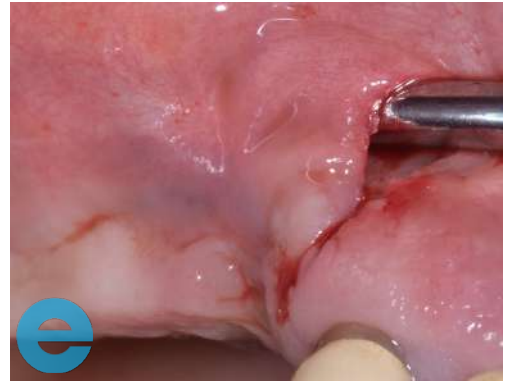


# TUNNEL GRAFT CASE STUDY



1. Initial clinical view. Note thin residual bridge and atrophy of the soft tissues.



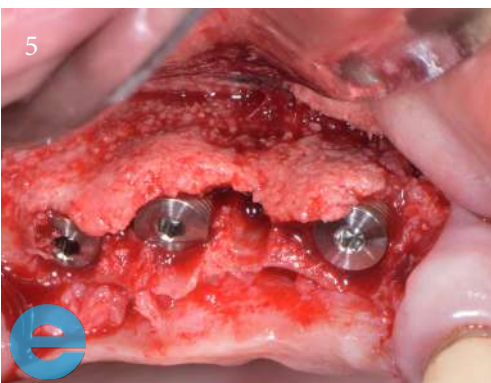
2. Vertical incision made distally to lateral incisor. Using a thin periosteal elevator, a sub-periosteal tunnel was created.



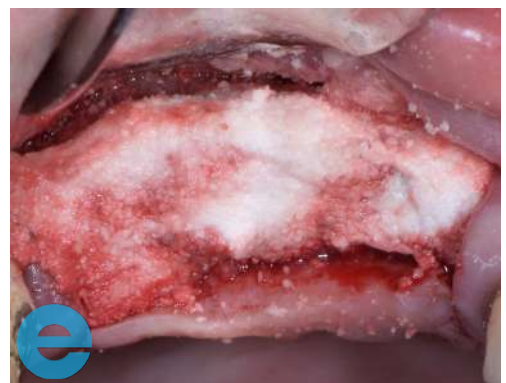
3. 1cc of EthOss® injected into the tunnel using a graft gun.



4. Clinical view immediately post-op.

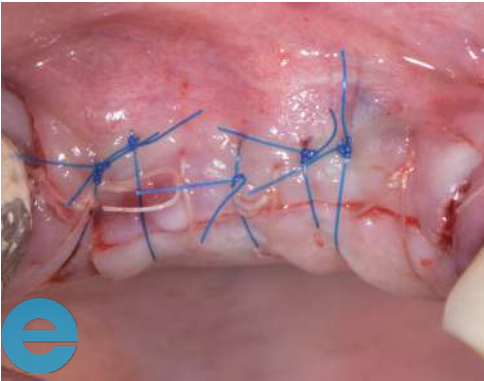


5. 12 weeks post-op. Adequate soft bone regenerated enabling implant placement. Note expansion of the new bone



6. Additional grafting with EthOss.

# TUNNEL GRAFT CASE STUDY



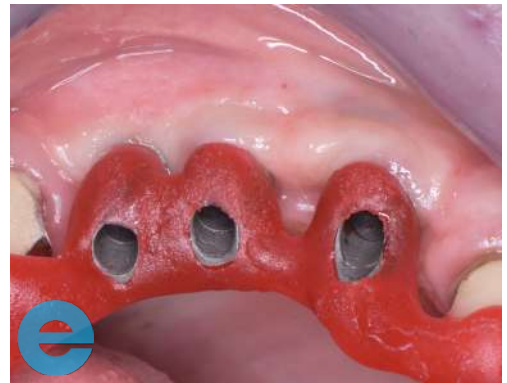
7. Tension-free closure.



8. 4 months post-op. Note augmented ridge and thick keratinized soft tissues.



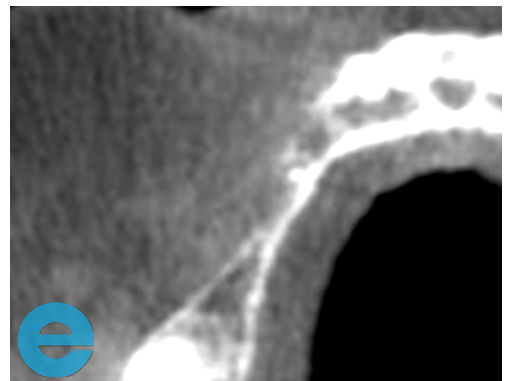
9. Penguin ISQ measurement showing excellent stability for all implants (ISQ: 70-71).



10. Prosthetic implant abutments in place, torqued to 35 Ncm.

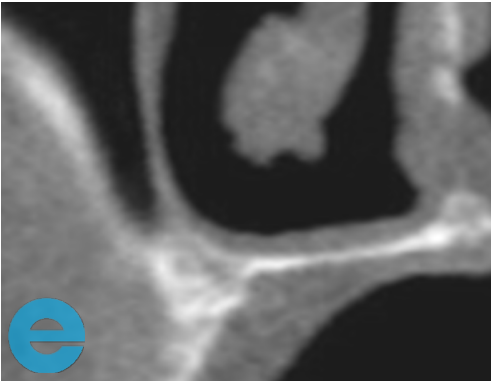


11. Final cement-retained restoration.

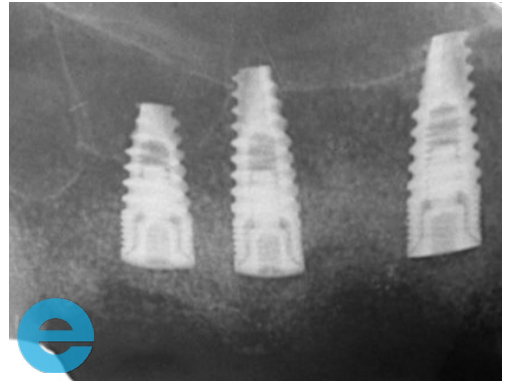


12. Axial CBCT view.

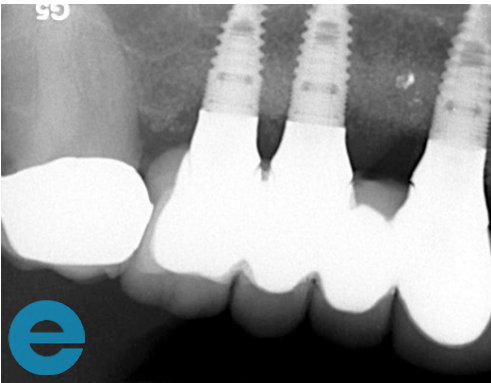
# TUNNEL GRAFT CASE STUDY



13. Coronal CBCT view.



14. Periapical x-ray immediately after implant placement.



15. Periapical x-ray immediately after fitting the restoration.



# GROW STRONGER

## USEFUL RESOURCES

### RECOMMENDED CLINICAL PROTOCOL

*Clinical study showcasing recommended clinical protocol for EthOss*

Download

### SURGICAL GUIDELINES

*The official recommended guide on how to use EthOss*

Download

### HOW TO MIX ETHOSS

*Explainer video*

Watch