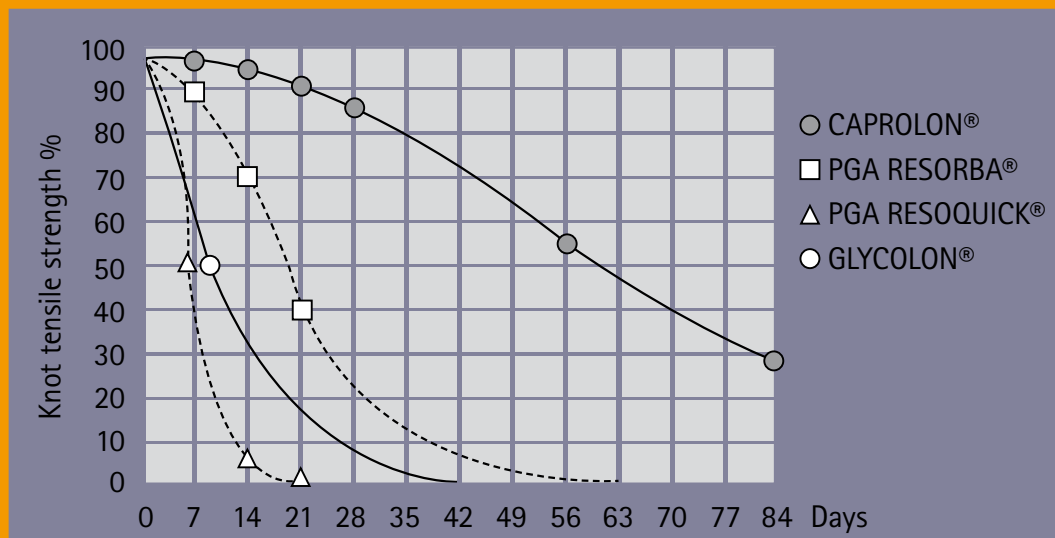


## GLYCOLON® – Fast and flexible

### The ideal material for every purpose

The range of RESORBA® sutures enables you to choose the ideal suture material for all demands on the absorption profile and the indicated suture.



### Product range

Suture colour: violet or undyed

Suture diameter: 6/0 - 1 USP or 0.7 - 4 metric

The product range includes atraumatic needle-suture combinations with round bodied, cutting or Premium needles and pre-cut suture packs (non-neededled).

Resorba Wundversorgung GmbH + Co. KG

Am Flachmoor 16  
D-90475 Nürnberg  
Germany

Fon: +49 (0) 91 28 - 91 15 - 0  
Fax: +49 (0) 91 28 - 91 15 - 91  
E-Mail: infomail@resorba.com  
www.resorba.com

CE 1275 P1049 09/2008

 **RESORBA®**  
REPARIEREN UND REGENERIEREN

Fast and flexible

 **RESORBA®**  
REPARIEREN UND REGENERIEREN



- ▶ Short absorption time
- ▶ Highly flexible with outstanding knotting properties
- ▶ Controlled knot run-down with reliable knot security
- ▶ Monofilament suture structure: no capillarity, no sawing action
- ▶ Very good passage through tissue without additional traumatization
- ▶ Optimum tissue compatibility

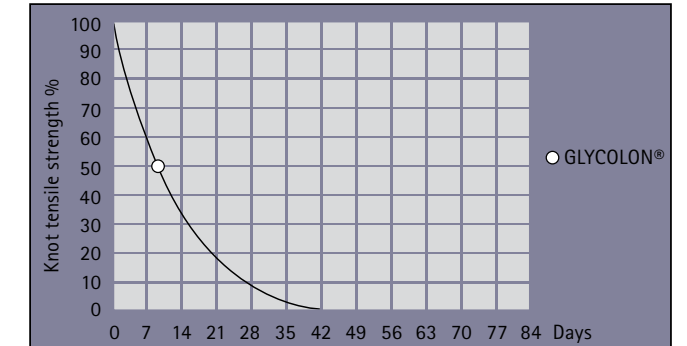
▶ GLYCOLON® - specially developed for indications with short wound healing:

- for intracutaneous skin closure
- in plastic surgery
- in gynaecology and obstetrics
- in urology



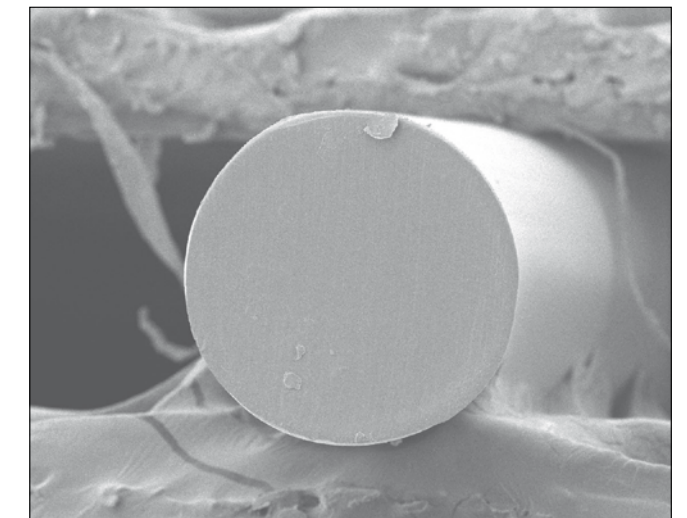
## Absorption properties

Absorbable suture materials approximate the tissues during the healing phase and progressively lose their tensile strength by standardised absorption. GLYCOLON® is a rapidly absorbed suture which loses half of its tensile strength after about 9 days.



## Biocompatibility

The special processing of GLYCOLON® leads to rapid absorption in the body. GLYCOLON® with its high degree of chemical purity is broken down in the tissues via the harmless intermediate products polyglycolic acid and caprolactone. In turn, these are enzymatically cleaved and metabolised. Potential tissue reactions are further minimised by the monofilament suture structure.



## Suture structure

GLYCOLON® is a polymer of polyglycolic acid and caprolactone. This is manufactured in a special ratio for more rapid absorption with the result that it loses its tensile strength considerably more quickly than other suture materials. The monofilament suture structure provides handling properties that are particularly desirable for long suture lines. They are marked by excellent passage through tissue, are highly flexible and provide reliable knot security.

