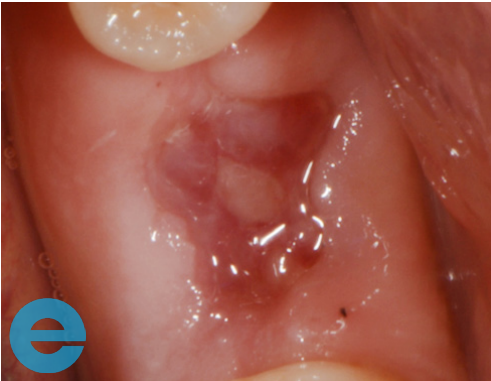
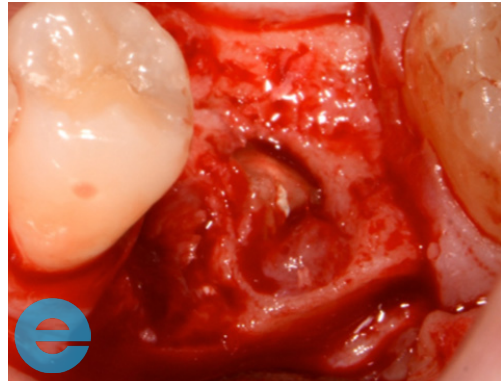


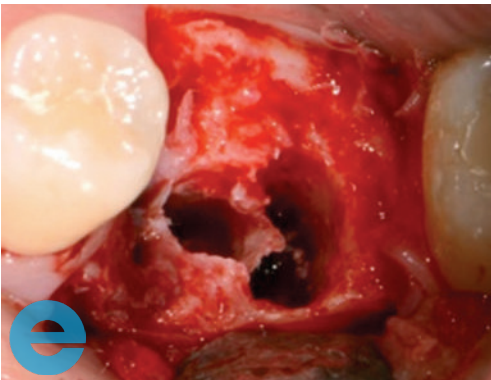
## LOWER MOLAR CASE STUDY



1. Routine 3 weeks soft tissue healing but distal root retained as referring dentist did not remove.



2. Retained root prior to removal.



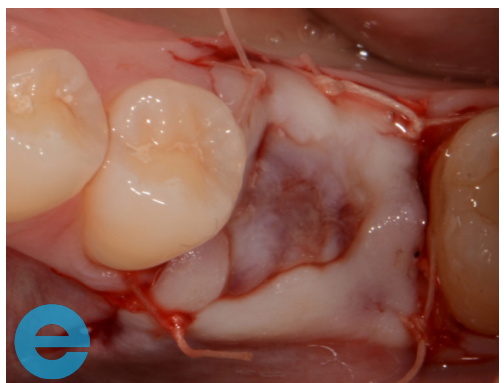
3. Showing osteotomy into the bifurcation bone.



4. Cover screw fitted, defect visible.



5. Site cleaned and grafted with EthOss®.

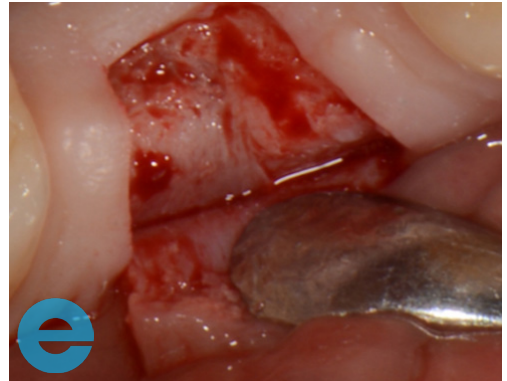


6. Suture closed - no collagen membrane.

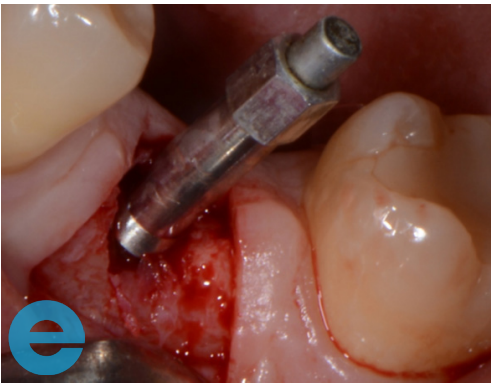
## LOWER MOLAR CASE STUDY



7. At loading, 12 weeks later showing retention of dimensions.



8. Another flap needed, bone growth covering implant. Use round bur to uncover implant.



9. Osstell reading taken, 78 ISQ.



10. Healing cap, 10 days healing.



11. Soft tissue healed.



12. Close up of soft tissue after 1 year.



# GROW STRONGER

## USEFUL RESOURCES

### RECOMMENDED CLINICAL PROTOCOL

*Clinical study showcasing recommended clinical protocol for EthOss*

Download

### SURGICAL GUIDELINES

*The official recommended guide on how to use EthOss*

Download

### HOW TO MIX ETHOSS

*Explainer video*

Watch