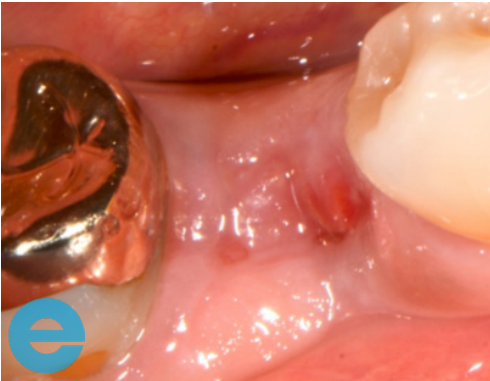
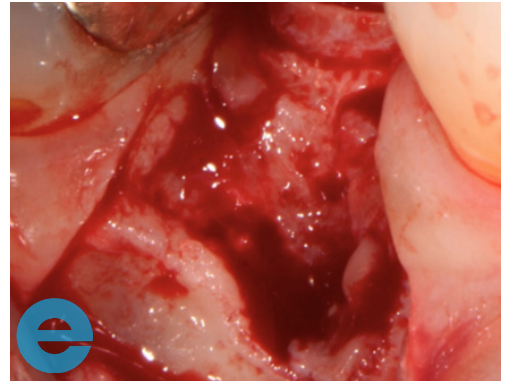


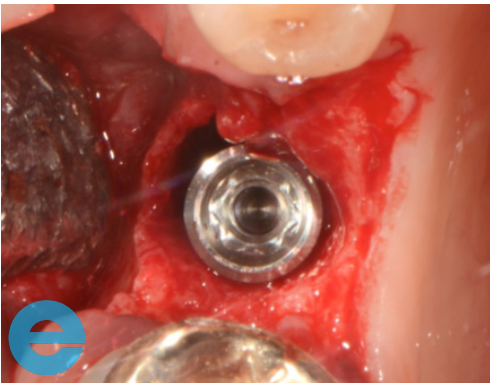
LOWER PRE-MOLAR CASE STUDY



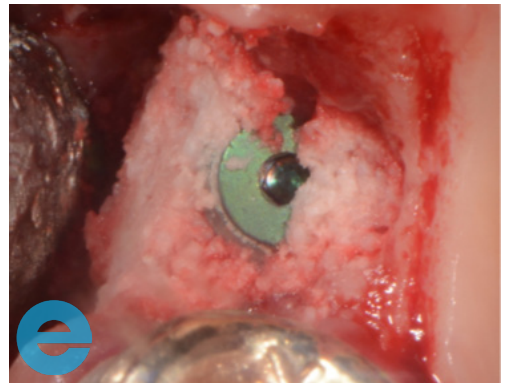
1. Lower right second premolar site at 3 weeks post extraction.



2. Site specific flap retaining the papillae, showing bone loss due to split root.



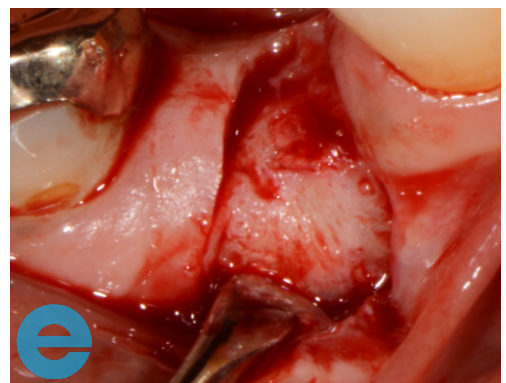
3. Implant placed in best position ready for grafting.



4. Buccal graft with EthOss® to regenerate bone.

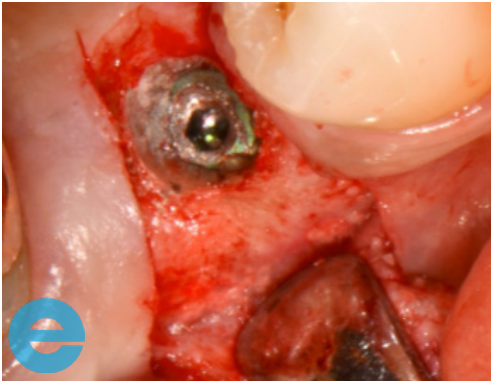


5. Good soft tissue healing at 10 weeks and restoration of the ridge.

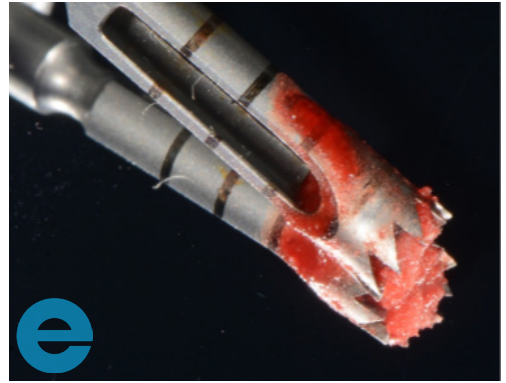


6. Flap raised to show newly regenerated bone at 10 weeks.

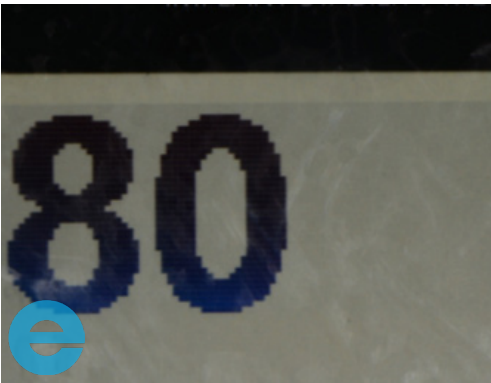
LOWER PRE-MOLAR CASE STUDY



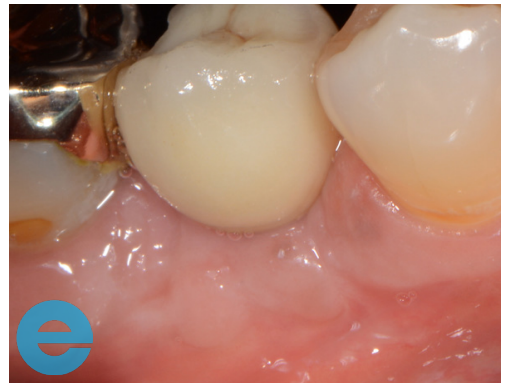
7. Site of core sample.



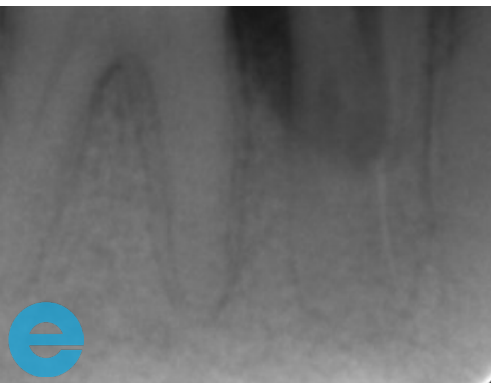
8. Core sample taken above the implant to gain access, sent for Histologic analysis.



9. Osstell meter reading at loading.



10. Case at 6 months.

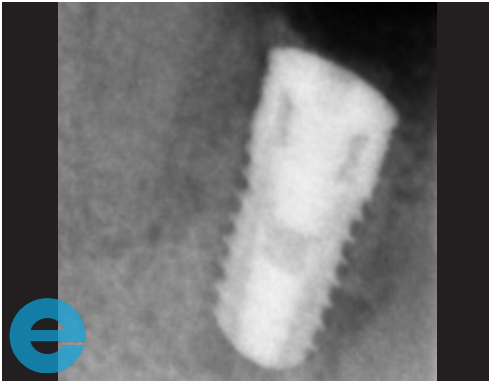


11. Radiograph showing split root and resultant bone loss.

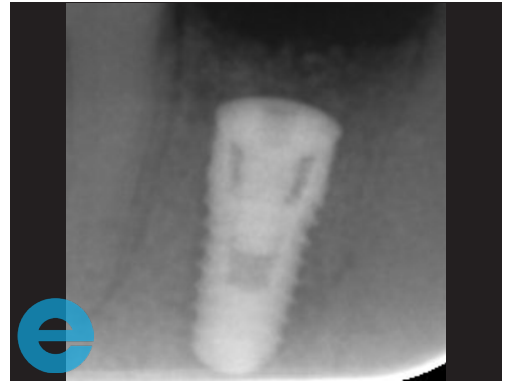


12. Radiograph of osteotomy creation.

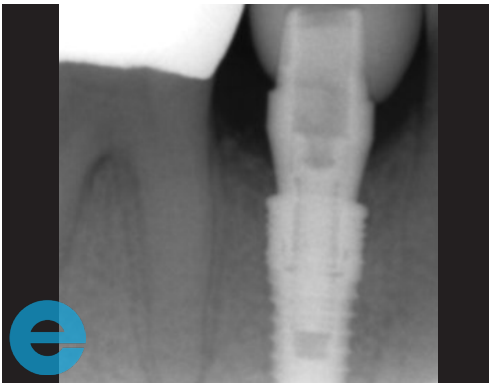
LOWER PRE-MOLAR CASE STUDY



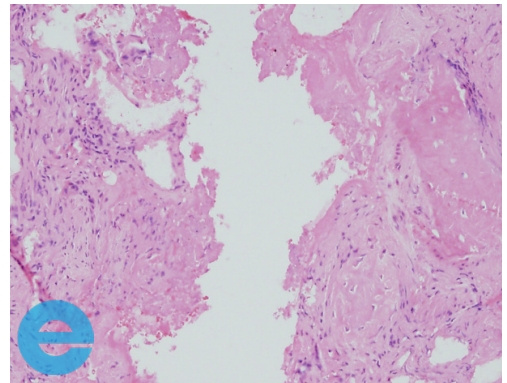
13. Radiograph of placed implant with graft material.



14. Radiograph at 10 weeks post placement showing raised bone level.



15. Radiograph at 6 months.



16. Histology by Prof. David Mangham, University of Birmingham, UK, showing approximately 50% (overall) induced woven bone.



GROW STRONGER

USEFUL RESOURCES

RECOMMENDED CLINICAL PROTOCOL

Clinical study showcasing recommended clinical protocol for EthOss

Download

SURGICAL GUIDELINES

The official recommended guide on how to use EthOss

Download

HOW TO MIX ETHOSS

Explainer video

Watch