

# MULTIPLE APICECTOMY UPPER PRE MOLAR

Female

52 years old

Diabetic, non-smoker

Long-term draining abscess  
with multiple previous  
apicectomies

*Case from Dr Peter  
Fairbairn, London, UK*



1. 3 weeks post extraction, loss of hard and soft tissues



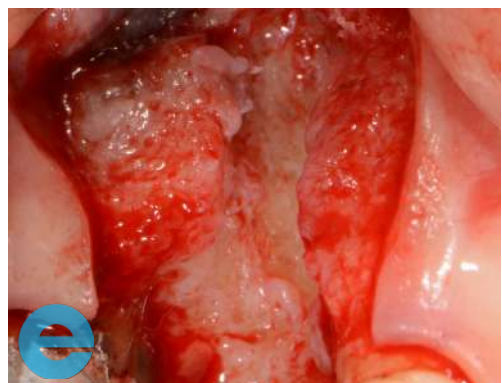
2. 3 weeks post extraction, loss of hard and soft tissues



3. 3 weeks post extraction, loss of hard and soft tissues

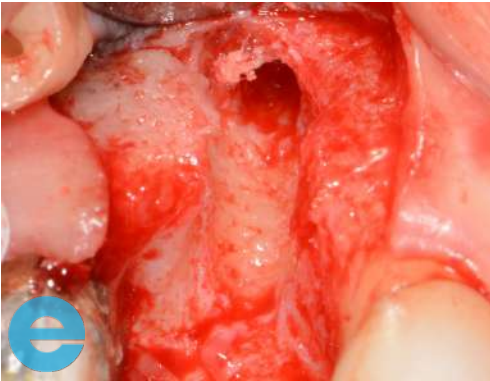


4. Flap raised showing granulation tissue



5. Granulation tissue removed to show defect in bone

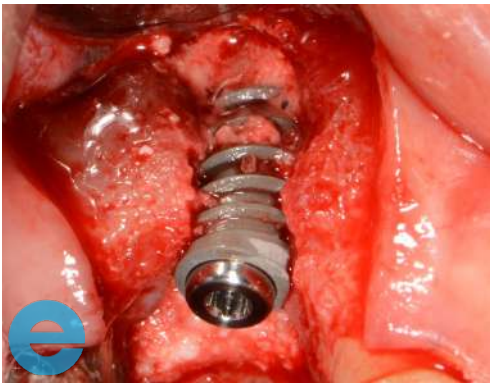
# MULTIPLE APICECTOMY UPPER PRE MOLAR



6. Clean site and initial osteotomy



7. EthOss graft on palatal aspect using "wet" mix



8. Implant placed, Bioner 3.5mm



9. Additional EthOss graft on buccal aspect using "dry" mix



10. EthOss becomes firm following 3-4 minutes pressure with a sterile gauze



11. 2 years loaded

# MULTIPLE APICECTOMY UPPER PRE MOLAR

Soft tissue graft done 4 years later for aesthetic reasons following patient request.

Plan was to use a tunnel technique however the tissue was too frail. A flap was raised which showed the regenerated site.



12. 4 years later - Free Gingival Graft from the tuberosity gingival tissue. Shows regenerated site



13. 1 month post soft tissue surgery showing improved soft tissue bulk



14. 6 months post soft tissue surgery

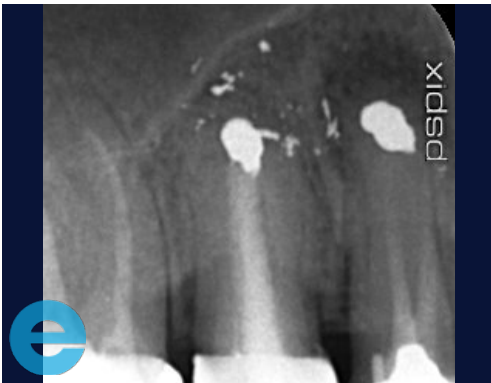


15. 6 months post soft tissue surgery

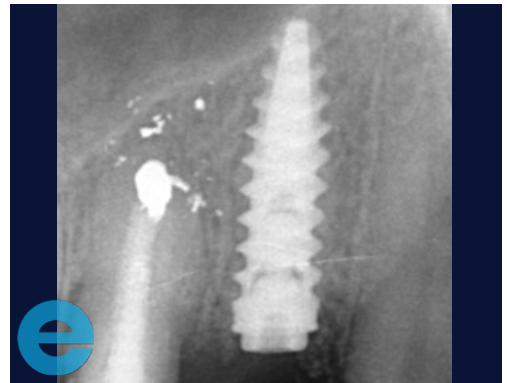


16. Matured tissue 1 year post soft tissue surgery

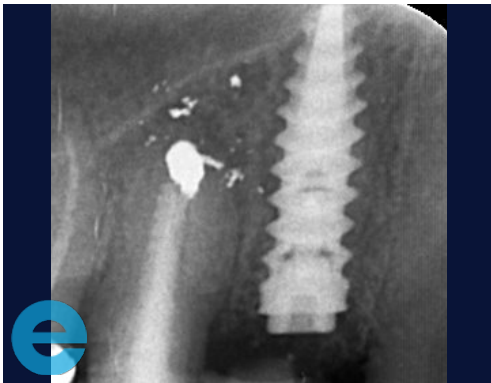
# MULTIPLE APICECTOMY UPPER PRE MOLAR



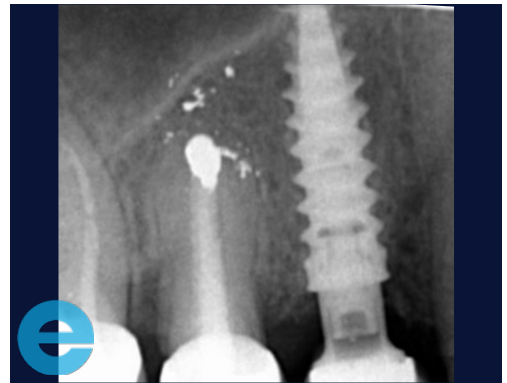
17. Initial situation - pre-op x-ray



18. Simultaneous implant placement and graft with EthOss



19. Load at 10 weeks



20. Loaded 18 months



21. Loaded 4 years



22. Loaded 6 years



# GROW STRONGER

## USEFUL RESOURCES

### RECOMMENDED CLINICAL PROTOCOL

*Clinical study showcasing recommended clinical protocol for EthOss*

Download

### SURGICAL GUIDELINES

*The official recommended guide on how to use EthOss*

Download

### HOW TO MIX ETHOSS

*Explainer video*

Watch