

PATIENT MEDICAL HISTORY

Female
35 years old

Healthy, non-smoker

Referred from dentist as patient did not want complex work or animal material.

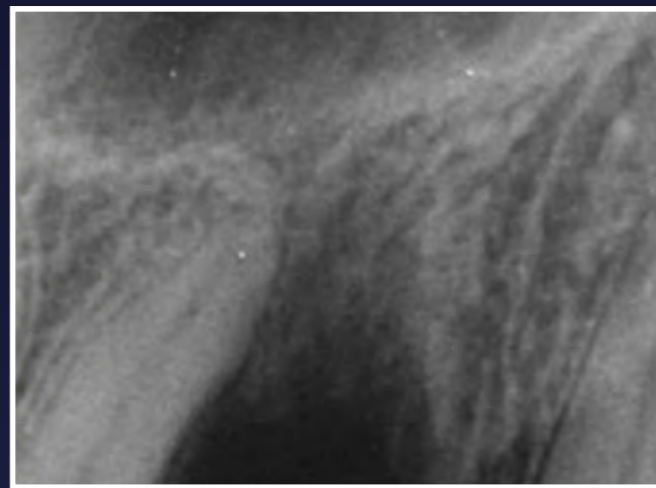
Case from Dr Peter Fairbairn,
London, UK



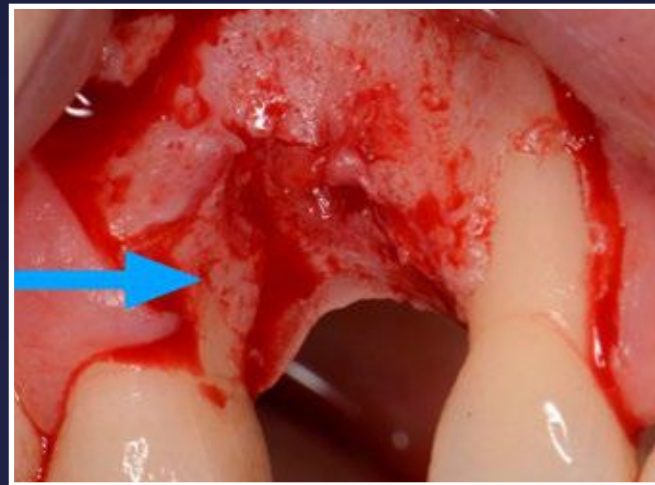
🇬🇧 Dr Peter Fairbairn



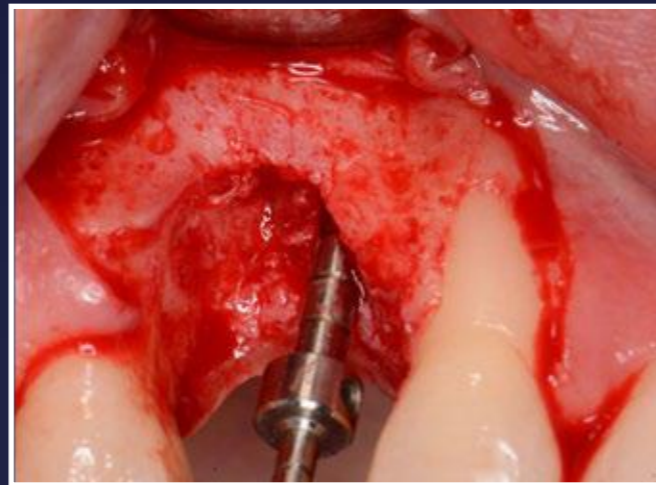
1. Vertical and horizontal loss of hard and soft tissues visible



2. Radiograph showing bone defect



3. Bigger flap required as we will be restoring the defect on the mesial of the second premolar, as shown by arrow



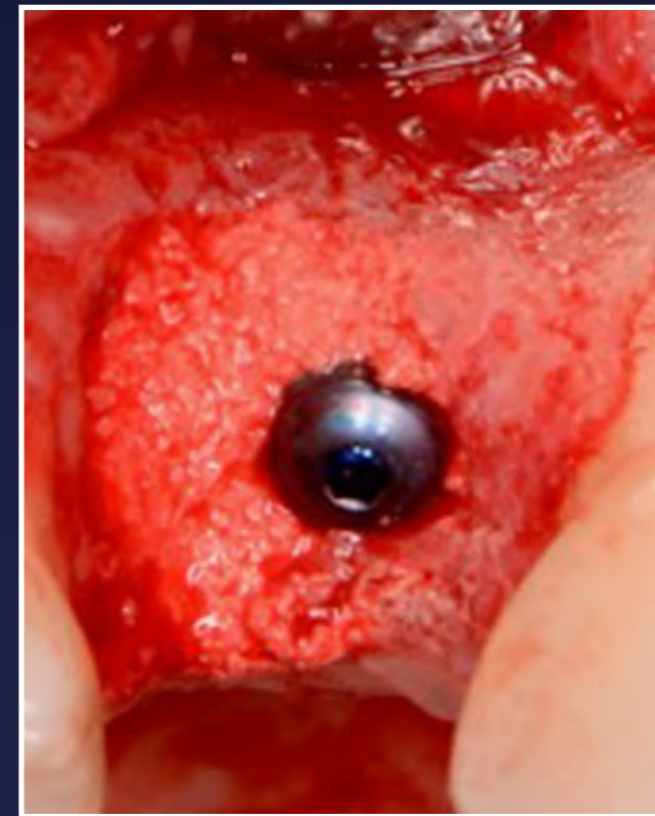
4. Hard tissue loss on the palatal - check the angle



5. Radiograph showing hard tissue loss on the palatal aspect - check the angle



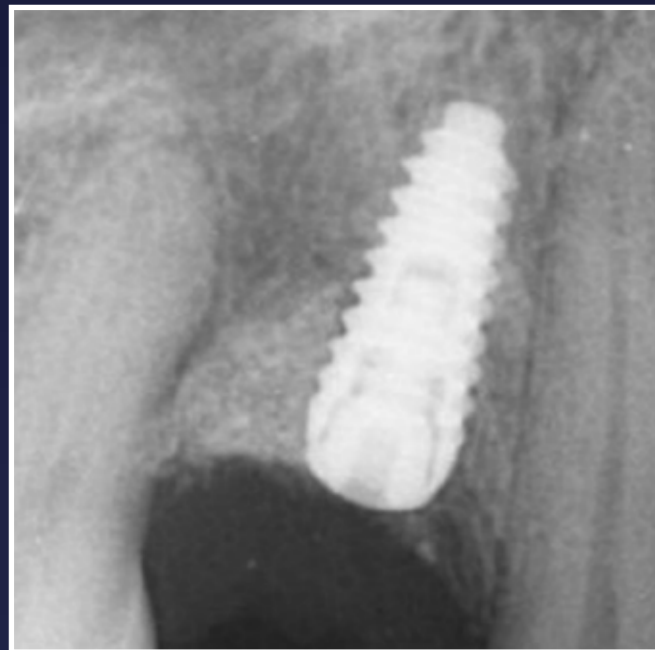
6. Palatal graft into the site and placement of 3.5mm wide implant to the correct level (1-2mm sub crestal)



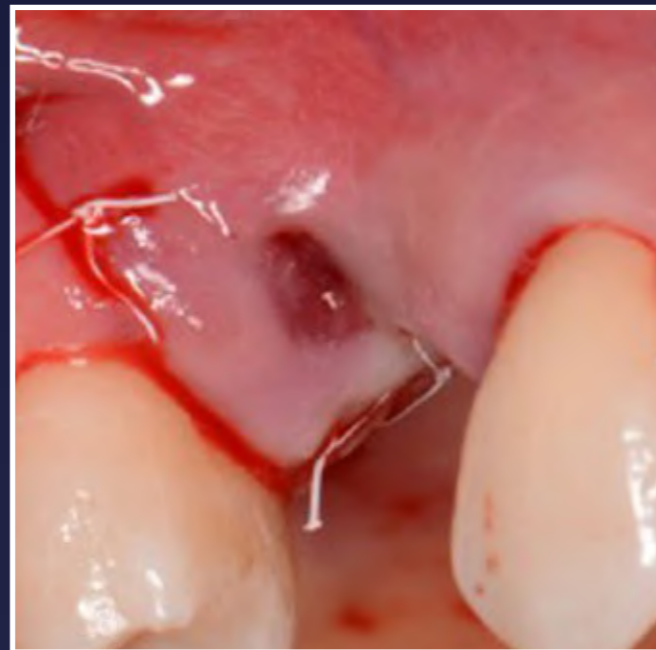
7. Implant placed



8. Additional bone graft to the correct level and on the buccal aspect with drier mix of EthOss



9. Radiograph of implant placement



10. Passive closure using PTFE sutures. Small opening on palatal aspect



11. Sutures removed at 4 days - healing on the open palatal area by secondary intention



12. Healed site at 10 weeks



13. Papilla sparing flap raised new bone visible on distal premolar



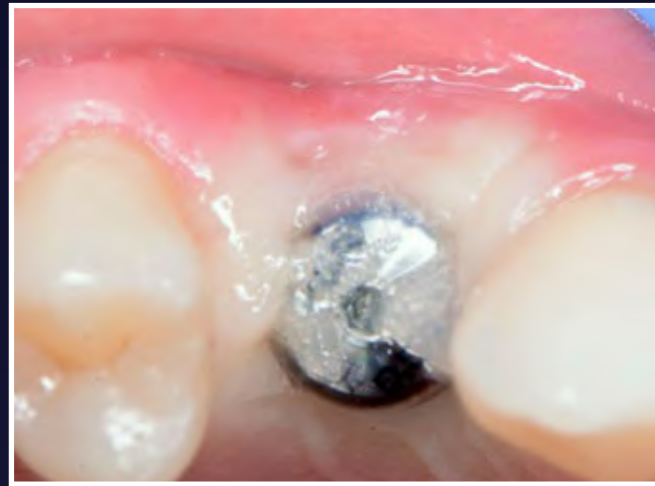
14. Small additional graft with EthOss



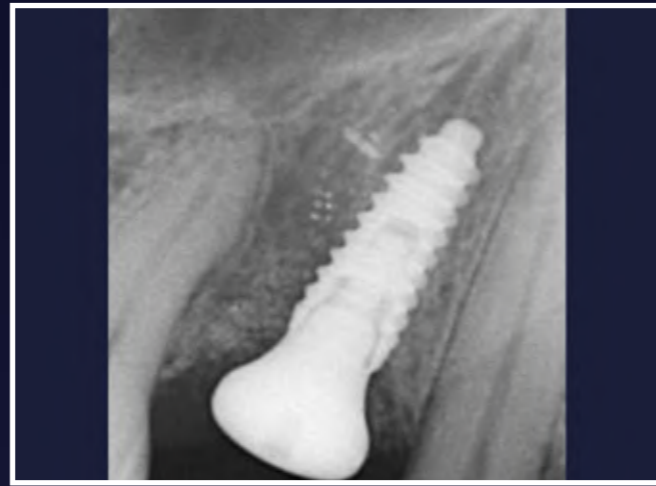
15. Healing cap placed



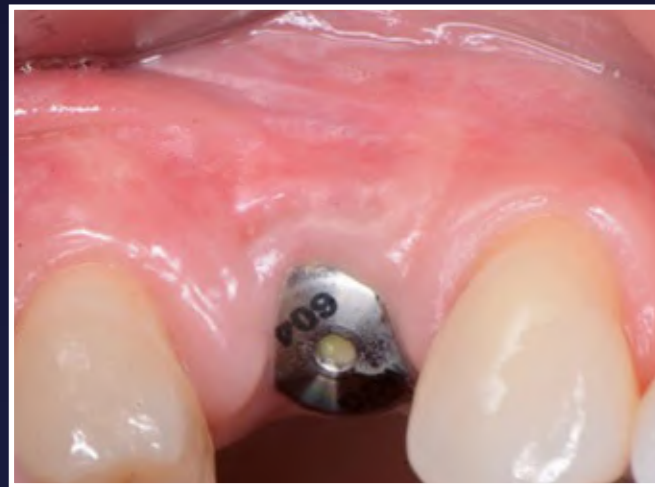
16. Sutures removed again at 4 days



17. Bigger healing cap to improve emergence and Blue®M gel used for soft tissue healing



18. Radiograph showing restoration of bone on the distal premolar



19. 2 weeks post-op



20. 2 weeks post-op



21. Loaded at 14 weeks post-op, restored papillae



22. Radiograph showing restored profile. This will improve with time and function

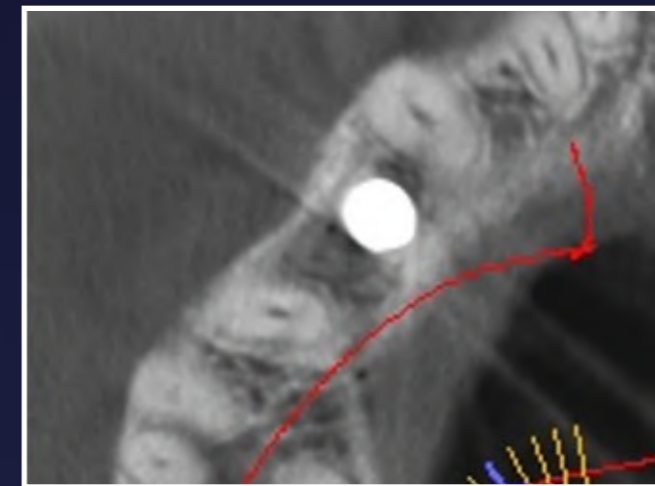
RESULTS



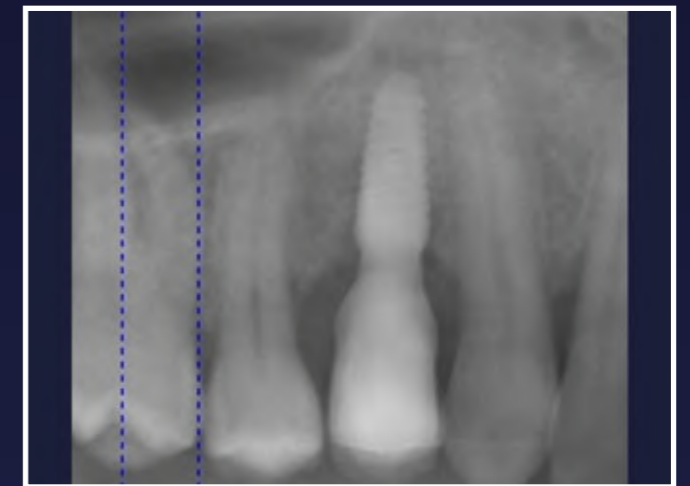
23. Loaded 6 months



24. Loaded 6 months



25. Loaded 9 months



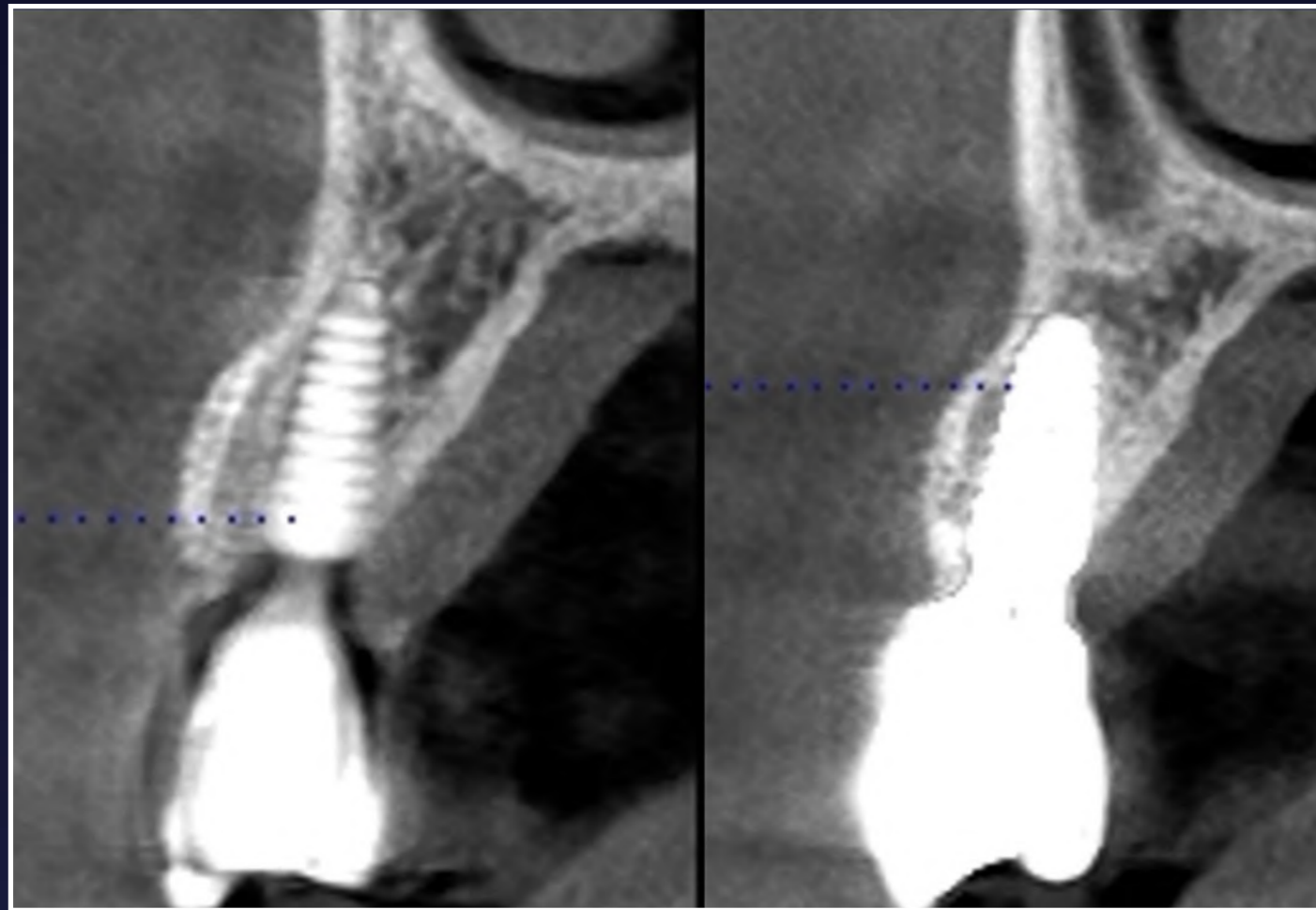
26. Loaded 9 months



27. Loaded 9 months



28. Loaded 9 months



29. Loaded 9 months



30. Before



31. Loaded 1 year

**GROW YOUR
EXPERTISE**