

Oral surgery and **implantology**

#whdentalwerk
f @ in ▶
video.wh.com

Now at
your dealer
or **wh.com**



Oral surgery & implantology

COMPANY	4-5
Product overview 1 Implantmed Plus, Implantmed Classic, Elcomed	6-7
Product overview 2 Surgical handpieces and contra-angles, Surgical handpieces and contra-angles with generator, prosthodontic screwdriver	8-9
Product overview 3 Piezomed, Piezomed instruments	10-11
Workflow-controlled solution	12-13
Implantmed Plus with ioDent® system	14-15
Implantmed Classic	16-17
Elcomed	18-19
Surgical handpieces and contra-angles	20-21
Surgical handpieces and contra-angles with generator	22-23
Piezomed	24-25
Piezomed module	26-27
Hygiene and maintenance	28-29
Technical data	30-36
Implantmed, Elcomed and Piezomed accessories	37

People have Priority

W&H at a glance

- › Headquarters in Austria
- › 1,200 employees worldwide
- › Established in 1890 in Berlin by Jean Weber and Hugo Hampel
- › Production facilities in Austria, Italy and Sweden
- › Represented in 110 countries
- › Export share over 95%

More information at [wh.com](https://www.wh.com)



W&H Dentalwerk
Bürmoos (A)



W&H Sterilization
Brusaporto (I)



The stakes are high.
We are working with
people.

Our backbone doesn't come from the stock exchange: W&H has been a family-owned company for generations. This is the origin of the spirit of innovation that developed devices such as Implantmed, Elcomed and Piezomed.

The secret of our success: W&H has always focused on people – regardless of whether they are partners, customers, patients or employees. See for yourself – it's no longer a secret! We don't want to keep any secrets from you.

All the **advantages** at a glance



Dr med. dent. Fred Bergmann
Dentist specializing in oral surgery

“The combination of Implantmed and Osstell ISQ module ensures improved treatment safety for me and my patients.”

Implantmed Plus

- › Intuitive user interface
- › New pump design
- › Ultra-short, powerful electric motor with 6.2 Ncm torque
- › Motor speed range: 200 to 40,000 rpm
- › W&H Osstell ISQ module (available as an accessory) for precise measurable implant stability
- › Automatic torque control: 5 to 80 Ncm
- › Automatic thread cutter function
- › Electric motor with cable, thermo washer disinfectable and sterilizable

[More information from page 12](#)



Dr med. dent. Robert Schwagierek, M. A.
Dentist specializing in oral surgery

“Ease of use makes it possible: high degree of safety and high-quality treatment for patients. Maximum efficiency in everyday practice.”

Implantmed Classic

- › Intuitive user interface, large, easy-to-read display
- › Ultra-short, powerful electric motor with 5.5 Ncm torque
- › Motor speed range: 300–40,000 rpm
- › Precise torque control, 5–70 Ncm
- › Automatic thread cutter function
- › Electric motor with cable, thermo washer disinfectable and sterilizable

[More information from page 16](#)



Dr Jörg Neugebauer
Dentist specializing in oral surgery

“The surgical procedure is not a time for compromises. Elcomed is clearly number 1 in the operating theatre.”

Elcomed

- › All information in one user level
- › Complete documentation via USB stick
- › Shortest and lightest motor with 50,000 rpm
- › Up to 80 Ncm on the rotary instrument
- › Six programs with individually adjustable parameters
- › Automatic thread cutter function
- › Motor with cable, thermo washer disinfectable and sterilizable

[More information from page 18](#)



All the **advantages**
at a glance



Dr Alexander Schatzdorfer
Dentist with his own practice

“Ideal for Implantmed and Elcomed:
precise and reliable”

Surgical handpieces and contra-angles with generator
With and without mini LED+

- › Fatigue-free working thanks to optimal ergonomics
- › Durable and robust due to high-quality stainless steel and scratch-resistant coating
- › Can be dismantled for thorough cleaning (except WI-75 E/KM)
- › Thermo washer disinfectable and sterilizable

With mini LED+

- › Work with daylight quality
- › Natural reproduction of red tones
- › Independent power supply with integrated generator
- › Longer lifespan than conventional halogen bulbs

[More information from page 20](#)



Nicholas Claydon BDS MscD PhD
MJDF RCS (eEng) FHEA
Consultant in Periodontology
and Implantology

“Premium design for quality and balance.
The top-class LED light sets new
standards.”

Surgical handpieces and contra-angles
With mini LED+ and W&H connection

- › Matches to Implantmed SI-1023, SI-1015, SI-1010
- › Optimal illumination at all stages of the work
- › Fatigue-free working thanks to ergonomic balance
- › Durable and robust due to high-quality stainless steel and scratch-resistant coating
- › Work with daylight quality
- › Natural reproduction of red tones
- › Can be dismantled for thorough cleaning
- › Thermo washer disinfectable and sterilizable
- › Developed for the W&H electric motor EM-19 LC

[More information from page 22](#)



Dr Ulrich Fürst
Specialist in oral surgery

“Incredible – cuts bone like butter.”

Piezomed

- › Automatic instrument detection
- › Three individual operating modes: “Power”, “Basic” and “Smooth”
- › Temporary 20% power increase thanks to boost function
- › Ideal illumination of the operating site through LED ring illumination
- › Efficient cooling thanks to spray opening close to the instrument’s area of activity
- › Handpiece with LED socket and cable, thermo washer disinfectable and sterilizable

[More information from page 24](#)



All the **advantages** at a glance



Prof. Christof Pertl
Dentistry in Graz

“Piezosurgery and Implantmed in one fascinating modular system. Comprehensive and powerful.”

Piezomed Plus and Classic module

- › Implantology motor and piezosurgery in one device
- › The Piezomed module can be combined with any Implantmed SI-10XX without any other devices, and therefore covers a wide range of surgical applications
- › The modular concept allows the device to be adjusted to the relevant user's requirements
- › The combination of Implantmed Plus and Piezomed module allows for workflow-controlled solutions in oral surgery and implantology
- › With the Piezomed Plus and Piezomed Classic module versions, W&H meets all the requirements of piezosurgery dental practice

[More information from page 26](#)



Instrument kit "Endo"
for retrograde endodontics
R1D, R2RD, R2LD, R3D,
R4RD, R4LD



Instrument kit "EX"
for extraction
EX1, EX2

Piezomed instruments

- › Range of innovative instruments for bone surgery, periodontology and extraction, retrograde endodontics as well as for lateral sinus lift, preparation of the implant site and special crestal applications
- › Improved cutting performance thanks to special serration on the bone blades
- › Extremely high cutting performance and time savings due to the new special saw's thin blade
- › Flexibility and individuality in working
- › Thermo washer disinfected and sterilizable



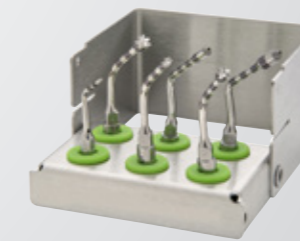
Instrument kit "Bone"
for bone surgery
B1, B2R, B2L,
B3, B4, B5



Instrument kit "Paro"
for periodontology
P1, P2RD, P2LD



Instrument kit Sinus "SPECIAL"
for lateral sinus lift
S1, S2, S3, S4, S5



Instrument kit "Implant/Crestal P"
for preparation of the implant site
I1, I2P, I3P, I4P, Z25P, Z35P



Instrument kit "Implant/Crestal A"
for special crestal applications
I1, I2A, I3A, I4A, Z25P, Z35P

Special saws
for bone surgery
(only available individually)



Workflow-controlled solution

Modularity for optimal flexibility

The combination of Implantmed Plus and Piezomed module changes the way oral surgery and implantology work.



Piezomed Plus and Classic module

Combine piezosurgery and implantology in one device.



Electric motor

Particularly small and surprisingly light – it enables you to work with ease.

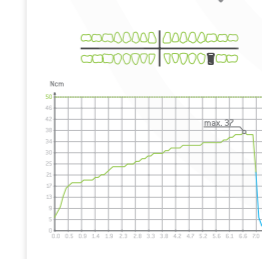


Straight and contra-angle handpieces

Provide optimal illumination of the treatment site and facilitate perfect, accurate treatment results.

Osstell Beacon

Bluetooth connection to the Osstell Beacon for easy measurement of implant stability.



Documentation of osseointegration

The documentation function conveniently saves all values of the implant insertion on a USB stick (PDF and XLS).



ioDent® system

Improves safety in the dental practice. Resources can be planned and used efficiently.



Wireless or wired foot control

Control the Implantmed Plus and Piezomed module with just one foot control.



For a simple work process

Safe, simple and flexible.

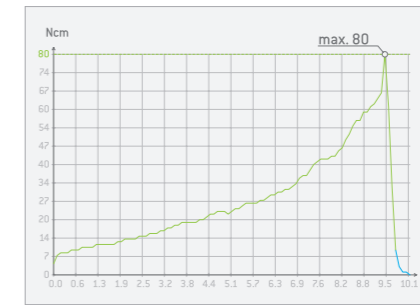
Implantmed Plus impresses users with its intuitive user interface and simplifies your treatment process. Every single Implantmed stands for top quality, precision and safety.



Osstell Beacon connection

- › Bluetooth connection to the Osstell Beacon for simple measurement of implant stability

Implantmed Plus



Secure placement

The automatic torque control: guarantees the required security. It can be adjusted from 5 to 80 Ncm.



Measurable stability

Implant stability can be measured precisely with the W&H Osstell ISQ module, which is available as an accessory.



With intuitive ease

Colour touch screen with user-friendly menu guidance and glass surface for easy cleaning.



For dental assistants

The newly designed pump enables the coolant hose to be inserted safely and quickly.



Absolute freedom of movement

The wireless foot control allows you to choose the optimal location in your working area. This ensures high safety levels in the treatment area.



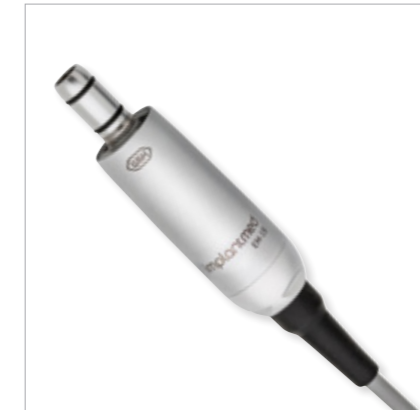
One for all

Control the functions of the Implantmed and Piezomed with only one foot control.

Focus on the essentials

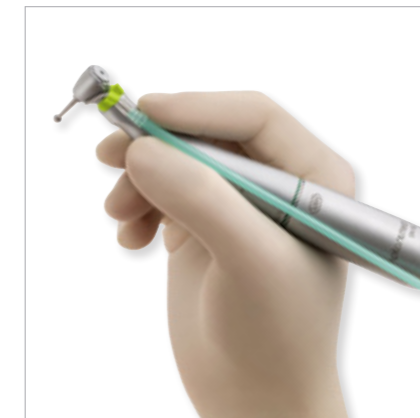
Ergonomic, simple and powerful. Implantmed impresses users with its intuitive ease of use. You can fully and completely concentrate on the most important aspect: your patients.

Implantmed Classic



Powerful motor

With a motor torque of 5.5 Ncm and a motor speed range of 300 to 40,000 rpm, Implantmed is an impressively powerful instrument.



Fatigue-free operation

The combination of the short motor and ergonomically shaped contra-angle handpiece are perfectly balanced. You can work for long periods without fatigue or cramps in your hand.



Easy to use

Its new display with auto-backlight makes Implantmed easy and uncomplicated to use.



Stress-free healing

The automatic thread cutter function supports you when inserting implants in hard bone. It prevents compression of the bone.

Number 1 in the operating theatre

Safe, reliable, powerful.

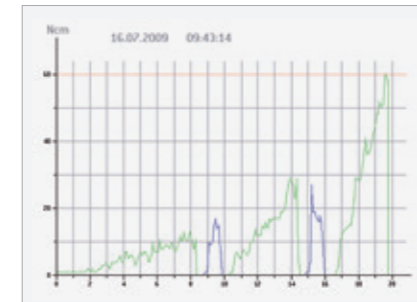
The W&H Elcomed has been designed specifically to meet the requirements of craniomaxillofacial surgery, dental surgery and implantology.



Elcomed



Everything at a glance
Revolutions per minute, torque and selected coolant volume all at one user level.



Complete documentation
Every step of the treatment is saved to a USB stick. The data is accessible at any time.



Automatic thread cutter function
Prevents excessive compression of the bone while screwing in the implant.



Convenient foot control
The multifunctional foot control allows sterile working and optimum freedom for your hands.



An amazing motor
Shortest and lightest motor with 50,000 revolutions per minute.



SPI dongle – upgrade at any time
Control the functions of the Elcomed with the wireless foot control, available as an accessory.

Fatigue-free and flexible operation

Durable, ergonomic and robust.

Whether inserting an implant or extracting a wisdom tooth, you can be sure of optimum cooling and illumination of the treatment site. High-quality stainless steel with a scratch-resistant coating makes the surgical handpieces and contra-angles robust and gives them a particularly long service life.

WS-75 L | 20:1

Specially designed for preparation of the implant site and implant insertion.

S-11 L | 1:1

The first choice for apical resection, osteotomy, sequestrotomy, bone modelling and bone smoothing as well as extraction of wisdom teeth.

WS-91 L | 1:2.7

45° head

Specially designed for improved access in the premolar and molar region.

WS-56 L | 1:1

WS-92 L | 1:2.7

Designed for osteotomy, sequestrotomy, germectomy and hemisection.



Surgical handpieces and contra-angles for Implantmed SI-1023, SI-1015, SI-1010



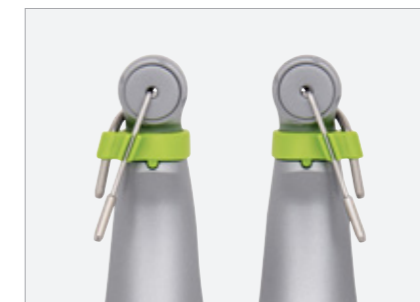
Fatigue-free operation

The combination with the ultra-short EM-19 electric motor allows for long periods of work without fatigue.



Optimal illumination

Thanks to it being half the size of a normal LED, the mini LED+ can be integrated very close to the tip and offers optimal illumination.



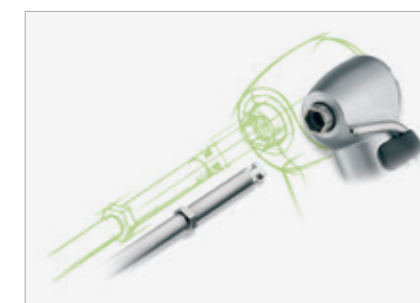
Variable cooling

There are spray clips available for the left and right. This means that cooling can be adjusted to the individual requirements.



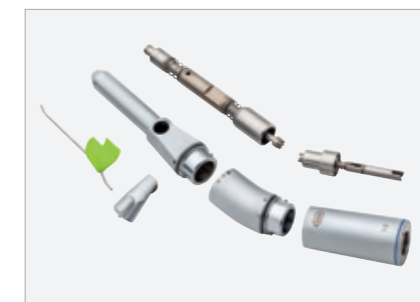
Scratch-resistant surface

The unique coating protects the instrument from scratches. This facilitates cleaning and preserves the value.



Hexagon chucking system

The hexagon chucking system developed and patented (EU, USA) by W&H ensures safe use even at high torques.



Perfect cleaning

To satisfy the stringent hygiene requirements, the instruments can be dismantled.

Leader in LED technology

Clear, bright and wide field of view.

Excellent lighting conditions facilitate accurate diagnoses and perfect treatment results. The surgical handpieces and contra-angles with mini LED+ produce light independently. An integrated generator supplies the LED in the instruments with power.

The contra-angle handpieces WS-91 and WS-91 L G with 45° head unite the advantages of straight and contra-angle handpieces. The 45° angle allows considerably better visibility of the treatment site. This is particularly helpful in the surgical extraction of wisdom teeth, precise tooth separations and apical resections. This makes palatal access to the maxillary molars much simpler, even with a small mouth opening. In contrast, in buccal applications, there is more space between the cheek and the operating site. At the same time, the view is barely affected. Depending on the drive speed, the ratio of 1:2.7 makes it possible to achieve speeds of up to 135,000 revolutions per minute on the rotary instrument. A triple spray guarantees sufficient cooling of the rotary instrument and the tooth.

Surgical handpieces and contra-angles with generator



**WS-75 (without light)
WS-75 L G (with mini LED+)**
Models specially designed for implantation.



**WS-56, WS-92 (without light),
WS-56 L G, WS-92 L G
(with mini LED+)**
These models are outstanding for difficult surgical procedures.



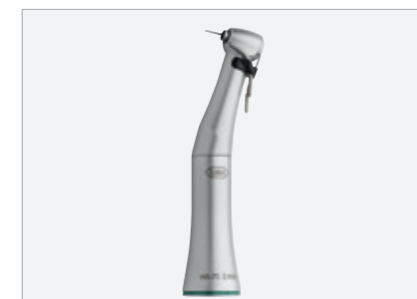
**WS-91 (without light)
WS-91 L G (with mini LED+)**
The 45° angle allows considerably better access and considerably better visibility of the treatment site.



**S-9, S-11 (without light)
S-9 L G, S-11 L G
(with mini LED+)**
The first choice for complex jaw procedures.



S-10, S-12, S-15 (without light)
Improves the view of areas where access is difficult.



WI-75 E/KM (without light)
Model specially designed for implantation.

The new force in bone surgery

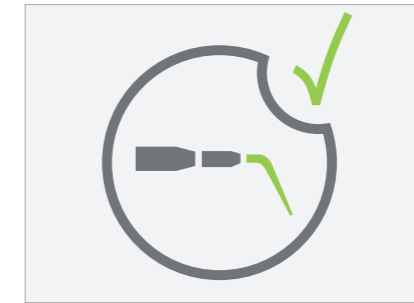
Minimally invasive, maximum power.

Piezomed facilitates the surgeon's work: thanks to innovative ultrasound technology, only bone substance is resected with high precision.

The surrounding soft tissue remains uninjured. What a huge relief for the patient: less pain, quicker healing!

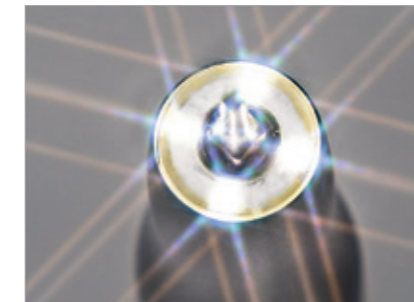


Piezomed



Automatic instrument detection

Piezomed detects the instrument when it is inserted and automatically sets the right power class.



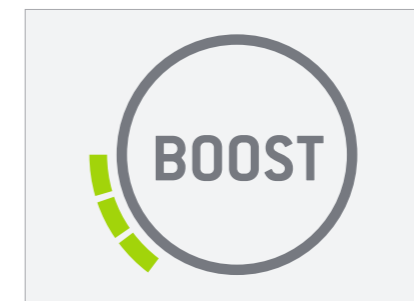
Innovative LED ring illumination

The shadow-free light ensures ideal illumination of the operating site.



Improved cutting precision

A new, specialized serration design guarantees precision cutting and saves time.



Extremely powerful and fast

The boost function can be used to increase the set basic power by 20% for a short period of time.



Efficient cooling

The spray is expelled close to the instrument's area of activity and thus provides ultra-efficient cooling of the operating site.



SPI dongle – upgrade at any time

Control the functions of the Piezomed with the wireless foot control, available as an accessory.

The game changer in piezosurgery

The **Piezomed module** combines an implantology motor and piezosurgery in one device. This means Implantmed can be combined with the Piezomed module and can be used to cover several surgical applications.

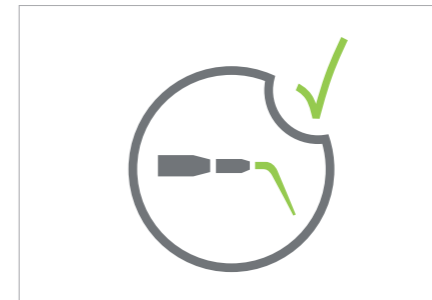
Two in one



Piezomed module



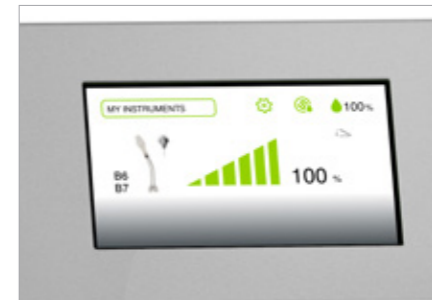
Modularity
The modularity offers the possibility of adapting the device to the requirements of the individual user.



Automatic instrument detection
Piezomed detects the instrument when it is inserted and automatically sets the right power class.



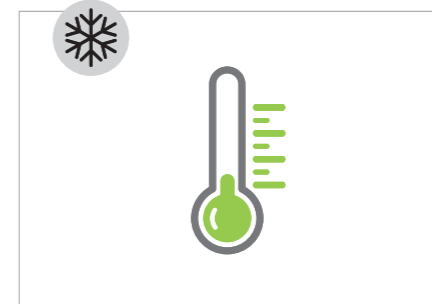
Efficient cooling of the operating site
The spray is expelled close to the instrument's area of activity and thus provides ultra-efficient cooling of the operating site.



Instrument library
Enables the individual setting of the most important treatment parameters for the preferred instruments.



Absolute freedom of movement
The wireless foot control allows you to choose the optimal location in the area of activity. This ensures a high level of safety in the treatment area.



Cooling without case fan
This prevents disruptive noises, and there is no impairment of the sterile environment due to the emission of cooling air.

Advanced Infection prevention Management Solutions

W&H AIMS is a step-by-step hygiene workflow to interrupt the chain of infection and prolong the lifespan of instruments.



Complete product range as a holistic solution

Sterilization, hygiene and maintenance are becoming increasingly important in dental practice. W&H offers best practice hygiene protocols as a complete solution for the reprocessing of your instruments and transmission instruments.



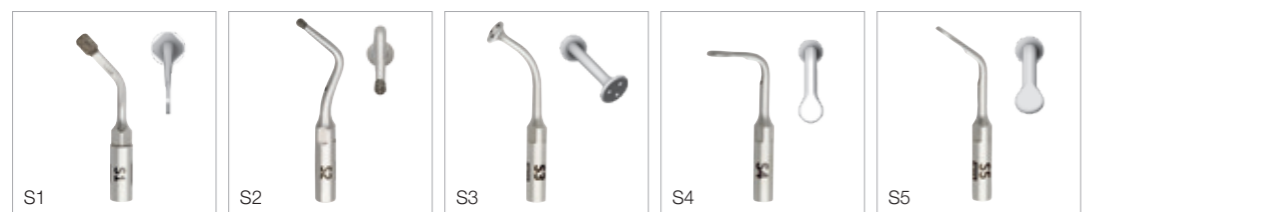
Overview

Piezomed instruments

Bone surgery



Lateral sinus lift



Extraction



Periodontology



Retrograde endodontics



Preparation of the implant site and special crestal applications (A = anterior area)



Preparation of the implant site and special crestal applications (P = posterior area)



Implantmed Plus



Type:	SI-1023	SI-1015	SI-1010
Supply voltage:	230 V	120 V	100 V
Permitted voltage fluctuation:	220–240 V	110–130 V	90–110 V
Nominal current:	0.3–0.8 A	0.3–1.6 A	0.3–1.4 A
Frequency:	50–60 Hz		
Supply fuse (2 pcs):	250 V – T1.6AH		
Maximum power consumption:	170 VA		
Maximum output:	80 W		
Maximum torque at the motor:	6.2 Ncm		
Motor speed range in the nominal voltage range:	200–40,000 rpm		
Coolant flow rate at 100%:	minimum 90 ml/min		
Length of motor cable:	1.8 m/3.5 m		
Dimensions in mm (height x width x depth):	100 x 262 x 291		
Foot control:	S-N2/S-NW		
Straight and contra-angle handpieces with mini LED+:	S-11 L/WS-56 L, WS-75 L, WS-91 L, WS-92 L		
Guarantee:	24 months		

Implantmed Classic



Type:	Implantmed SI-923	Implantmed SI-915
Supply voltage:	230 V	120 V
Permitted voltage fluctuation:	220–240 V	110–130 V
Nominal current:	0.3–0.8 A	0.3–1.6 A
Frequency:	50–60 Hz	
Supply fuse (2 pcs):	250 V–T1.6 AH	
Maximum power consumption:	160 VA	
Maximum output:	80 W	
Maximum torque at the motor:	5.5 Ncm	
Motor speed range in the nominal voltage range:	300–40,000 rpm	
Coolant flow rate at 100%:	minimum 90 ml/min	
Dimensions in mm (height x width x depth):	100 x 235 x 240	
Weight in kg:	2.7 kg	
Foot control:	S-N2	
Straight and contra-angle handpieces:	WI-75 E/KM / S-9 L G / S-11 L G / WS-56 L G / WS-75 L G / WS-91 L G / WS-92 L G	
Guarantee:	12 months	

Elcomed



Type:	SA-310
Supply voltage:	220–240 V/100–130 V
Permitted voltage fluctuation:	±10%
Nominal current:	0.1–0.9 A/0.1–1.8 A
Frequency:	50–60 Hz
Supply fuse (2 pcs):	250 V – T1.6AH
Maximum power consumption:	180 VA
Maximum output:	100 W
Maximum torque at the motor:	7 Ncm
Motor speed range in the nominal voltage range:	300 rpm – maximum 50,000 rpm, Safety stop at 40,000 rpm
Coolant flow rate at 100%:	minimum 90 ml/min
Length of motor cable:	1.8 m/3.5 m
Dimensions in mm (height x width x depth):	109 x 256 x 305
Foot control:	S-N1
Straight and contra-angle handpieces:	ISO connection 3964 (DIN 13940)

Surgical handpiece with mini LED+ and W&H connection



Type:	S-11 L
Transmission ratio:	1:1
Coupling system:	W&H EM-19 LC/EM-19
Lighting system:	Mini LED+
Spray:	External
Chucking system:	Lever chuck
Rotary instruments: Permitted bur length:	for surgical burs and cutters with Ø 2.35 mm* 45 mm
Maximum drive speed:	50,000 rpm
Can be dismantled:	yes
Indication, e.g.	Apical resection osteotomy sequestrotomy bone modelling and bone smoothing extraction of wisdom teeth

* also Stryker system

Surgical contra-angle handpieces with mini LED+ and W&H connection



Type:	WS-75 L	WS-56 L	WS-91 L	WS-92 L
Transmission ratio:	20:1	1:1	1:2.7	1:2.7
Coupling system:	W&H EM-19 LC/EM-19			
Lighting system:	Mini LED+			
External spray:	single		triple	
Internal cooling system:	Kirschner/Meyer	–	–	–
Chucking system:	Push-button chuck system			
Rotary instruments:	for surgical burs and cutters with contra-angle shaft Ø 2.35 mm		FG shank Ø 1.6 mm	
Maximum drive speed:	50,000 rpm			
Can be dismantled:	yes			
Indication, e.g.	Preparation of the implant site implant insertion	osteotomy sequestrotomy germectomy hemisection	for improved access in the premolar and molar region	

Piezomed

Type:	SA-320
Supply voltage:	220–240 V/100–130 V
Permitted voltage fluctuation:	±10%
Nominal current:	0.1–0.5 A/0.1–1.0 A
Frequency:	50–60 Hz
Maximum power consumption:	90 VA
Maximum output:	24 W
Operating frequency:	22–35 kHz
Coolant flow rate at 100%:	minimum 50 ml/min
Length of handpiece cable:	1.8 m/3.5 m
Dimensions in mm (height x width x depth):	109 x 256 x 305
Foot control:	S-N1 S-NW with SPI dongle

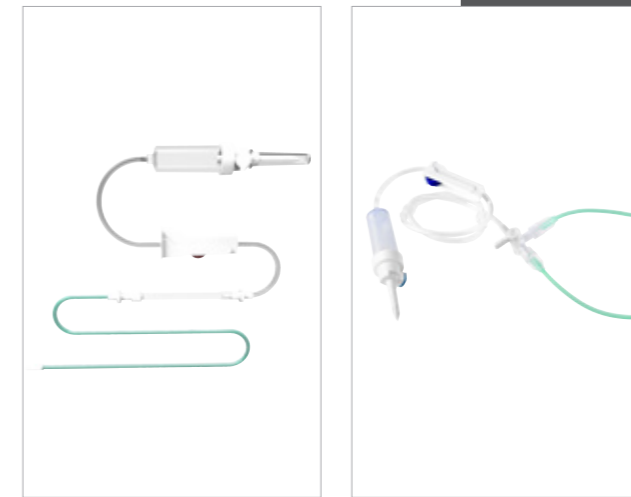
Piezomed Plus and Classic module

CE
0297

Type:	Piezomed Plus module SA-435 M	Piezomed Classic module SA-430 M
Supply voltage:	100–240 V	
Frequency:	50–60 Hz	
Permitted voltage fluctuation:	±10%	
Nominal current:	1.6 A	
Mains frequency:	50–60 Hz	
Maximum ultrasonic output:	24 W	18 W
Operating frequency:	22–35 kHz	
Coolant flow rate at 100%:	minimum 90 ml/min	
Length of handpiece cable:	1.8 m/3.5 m	1.8 m without light
Dimensions in mm (height x width x depth):	90 x 140 x 285	
Weight:	0.7 kg	0.6 kg
Foot control:	S-N2/S-NW	

* 24 W with boost function

Accessories for Implantmed, Elcomed, Piezomed and Piezomed module



Coolant hose

- › Precise fit
- › Save time for your dental assistants
- › Safety for your Implantmed

Irrigation tubing set

- › Y-manifold
- › Available in 2.2 m and 3.5 m



Surgical trolley

- › Your W&H control units in one compact location
- › Space-saving
- › Mobile



Transportation case

- › Securely wrapped for travel
- › Space for Implantmed, foot control, W&H Osstell ISQ module, straight and contra-angle handpieces
- › Also available for Elcomed and Piezomed

W&H Dentalwerk Bürmoos GmbH

Ignaz-Glaser-Straße 53, Postfach 1

5111 Bürmoos, **Austria**

t +43 6274 6236-0

f +43 6274 6236-55

office@wh.com

wh.com

20452 AEN Rev. 005 / 07.02.2022

Subject to alterations

Pictures are for illustrative purposes only. Additional equipment and accessories shown are not included as standard.