

#whdentalwerk



video.wh.com

Now at  
your dealer  
or [wh.com](http://wh.com)



minimally  
invasive,  
**maximum  
power**



piezomed

**BOOST**

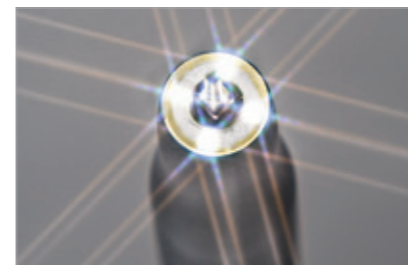
**Extremely powerful and fast**

The boost function can be used to increase the set basic power by 20 % for a short period of time.



## The new force in bone surgery

Piezomed facilitates the surgeon's work: thanks to innovative ultrasound technology, only bone substance is resected with high precision. The surrounding soft tissue remains uninjured. A noticeable relief for the patient: less pain, quicker healing!



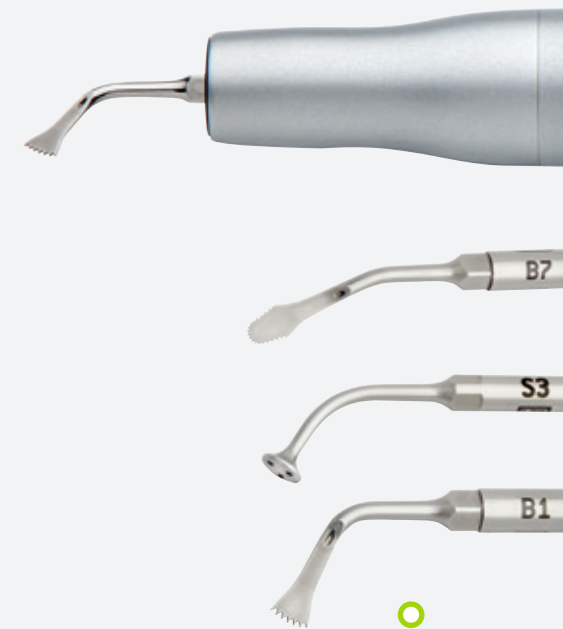
**Innovative LED ring**

The shadow-free light ensures ideal illumination of the operating site.



**Improved cutting precision**

A new, specialised tooth design guarantees precision cutting and saves time!



**Automatic instrument detection**

Piezomed detects the inserted instrument and protects it against overloading.

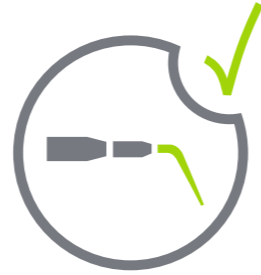


**Efficient cooling**

The spray exits near the instrument's area of activity and cools the operating site extremely efficiently.

## Automatic instrument detection

A world first: as soon as an instrument is inserted, Piezomed automatically detects the instrument and assigns it to the correct power class. This not only facilitates operation but also increases safety. In addition, the risk of overloading the instruments is reduced and the service life of your instruments considerably extended!



### Automatic instrument detection

Piezomed detects the instrument during insertion and sets the correct power class automatically.



### Every instrument in its place

Clearly arranged and ready-to-use in practical instrument holders.



### New tooth design

Fine-toothed saw for fine cuts, with little bone loss when harvesting bone blocks.

	3
	3
	90
	50%
	B

### Individual performance setting

The power can be changed manually within the detected power class.



### Sinus instrument

Detaches the Schneiderian membrane gently from the bone. It is also protected by the coolant film.



### New special saw

The new bone saw amazes with its extremely high cutting performance. You work efficiently and save time!

## Piezomed adapts to your style of working

Piezomed adapts to your personal way of working: The device saves your last selected settings and supports you with three individual operating modes: »Power«, »Basic« and »Smooth«. In addition, with its range of innovative instruments, W&H offers you the right instrument for every application.



### Cooling right where it is needed

The supply of coolant through the instrument to near the operating point guarantees optimal cooling of the instrument and the hard tissue.



### Practical foot control

The multifunctional foot control allows sterile working and optimal freedom for your hands.

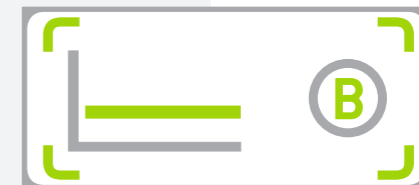
### »Power« operating mode

The handpiece's power is increased by increasing pressure on the instrument. (Boost function possible)



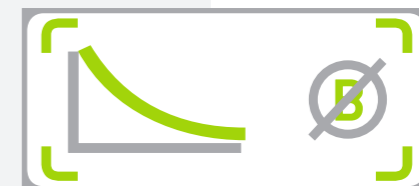
### »Basic« operating mode

The handpiece power remains the same irrespective of the load on the instrument. (Boost function possible)



### »Smooth« operating mode

The handpiece's power is reduced by increasing pressure on the instrument.



## Flexible and ergonomic

Wireless foot control for controlling multiple W&H devices, such as Implantmed and Piezomed.



### Absolute freedom of movement

With the wireless foot control you can select the optimum position in the work area without restrictions. This means complete safety in the treatment area.



### One for all

Control the functions of the Implantmed and Piezomed with only one foot control.



## Surgical procedures have never been as quick and safe

Piezomed puts all the advantages of innovative ultrasound technology at your fingertips: High-frequency microvibrations allow cutting with incredible precision. In addition, with the so-called cavitation effect you can also ensure an almost blood-free surgical site. In other words: minimally invasive, maximally effective!

**Bone block harvesting**  
Ideal for the transplantation of intraoral bone blocks. For fine and deep cuts in record time!

**Extraction with perioste**  
Even in complicated extractions, it is possible to avoid bone and soft tissue damage.

**Micrometrical incisions**  
Piezomed permits minimally invasive operations with maximum surgical precision.



**Lateral sinus lift**  
Atraumatic bone preparation and augmentation. Detachment of the membrane without perforating it.

**Alveolar ridge splitting**  
The surgical incisions are precise and reliable, the surgical site free from blood.

**Selective incisions**  
Protection of soft tissue: nerves, vessels and membranes are not damaged. Quicker healing process!

»Incredible easy to use in between  
the Implantmed and the Piezomed.«

Prof. Dr. José Luis Calvo Guirado D.D.S, PhD, Eu PhD, M.S.,  
oral surgeon, Spain

# Technical data



<b>Type:</b>	<b>SA-320</b>
<b>Mains voltage:</b>	100 – 130 V / 220 – 240 V
<b>Permissible voltage fluctuation:</b>	±10 %
<b>Rated current:</b>	0.1 – 1.0 A / 0.1 – 0.5 A
<b>Frequency:</b>	50 – 60 Hz
<b>Max. power consumption:</b>	90 VA
<b>Max. output power:</b>	24 W
<b>Coolant flow rate at 100 %:</b>	min. 50 ml/min
<b>Size (W x D x H):</b>	256 x 305 x 109 mm
<b>Weight:</b>	7 kg

## Manufacturer:

**W&H Dentalwerk Bürmoos GmbH**  
Ignaz-Glaser-Straße 53, Postfach 1  
51111 Bürmoos, **Austria**  
**t** +43 6274 6236-0  
**f** +43 6274 6236-55  
office@wh.com  
**wh.com**

## Distribution:

**W&H (UK) Limited**  
6 Stroud Wood Business Centre  
Park Street, St Albans, Hertfordshire AL2 2NJ, **United Kingdom**  
**t** +44 1727 874990  
**f** +44 1727 874628  
office.uk@wh.com  
**wh.com**

